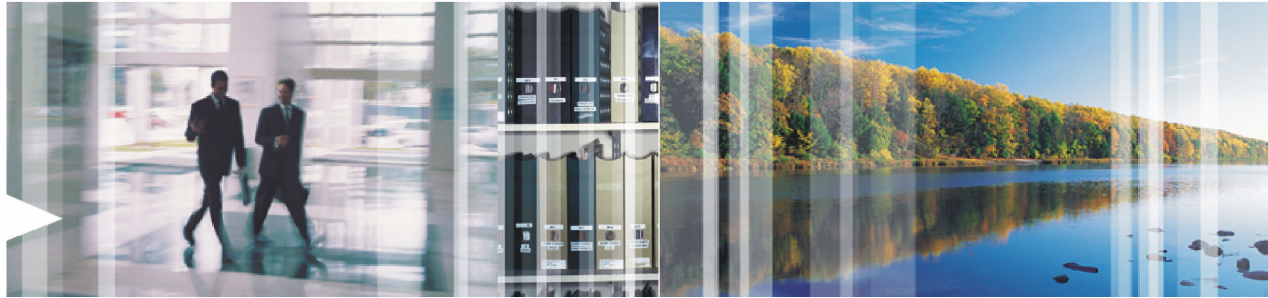




# **BMC® Performance Manager Monitoring Studio by Sentry Software Reference Guide**



## **Supporting**

BMC® Performance Manager Monitoring Studio version 8.4.01, by Sentry Software

**February 1, 2006**



## Contacting BMC Software

You can access the BMC Software Web site at <http://www.bmc.com/>. From this Web site, you can obtain information about the company, its products, corporate offices, special events, and career opportunities.

### United States and Canada

**Address** BMC Software, Inc. 2101 CityWest Blvd.  
Houston TX 77042-2827

**Telephone** 713 918 8800 or  
800 841 2031

**Fax** 713 918 8000

### Outside United States and Canada

**Telephone** (01) 713 918 8800

**Fax** (01) 713 918 8000

Copyright 2005 BMC Software, Inc. or licensors, as an unpublished work. All rights reserved.

BMC Software, the BMC Software logos, and all other BMC Software product or service names are registered trademarks or trademarks of BMC Software, Inc.

IBM is a registered trademark of International Business Machines Corporation.

DB2 is a registered trademark of International Business Machines Corporation.

Oracle is a registered trademark, and the Oracle product names are registered trademarks or trademarks of Oracle Corporation.

All other trademarks belong to their respective companies.

BMC Software considers information included in this documentation to be proprietary and confidential. Your use of this information is subject to the terms and conditions of the applicable End User License Agreement for the product and the proprietary and restricted rights notices included in this documentation.

## Restricted Rights Legend

U.S. Government Restricted Rights to Computer Software. UNPUBLISHED -- RIGHTS RESERVED UNDER THE COPYRIGHT LAWS OF THE UNITED STATES. Use, duplication, or disclosure of any data and computer software by the U.S. Government is subject to restrictions, as applicable, set forth in FAR Section 52.227-14, DFARS 252.227-7013, DFARS 252.227-7014, DFARS 252.227-7015, and DFARS 252.227-7025, as amended from time to time. Contractor/Manufacturer is BMC Software, Inc., 2101 CityWest Blvd., Houston, TX 77042-2827, USA. Any contract notices should be sent to this address.

## Customer Support

You can obtain technical support by using the Support page on the BMC Software Web site or by contacting Customer Support by telephone or e-mail. To expedite your inquiry, please see “[Before Contacting BMC Software.](#)”

### Support Web Site

You can obtain technical support from BMC Software 24 hours a day, 7 days a week at [http://www.bmc.com/support\\_home](http://www.bmc.com/support_home). From this Web site, you can

- read overviews about support services and programs that BMC Software offers
- find the most current information about BMC Software products
- search a database for problems similar to yours and possible solutions
- order or download product documentation
- report a problem or ask a question
- subscribe to receive e-mail notices when new product versions are released
- find worldwide BMC Software support center locations and contact information, including e-mail addresses, fax numbers, and telephone numbers

### Support by Telephone or E-mail

In the United States and Canada, if you need technical support and do not have access to the Web, call 800 537 1813. Outside the United States and Canada, please contact your local support center for assistance. To find telephone and e-mail contact information for the BMC Software support center that services your location, refer to the Contact Customer Support section of the Support page on the BMC Software Web site at [http://www.bmc.com/support\\_home](http://www.bmc.com/support_home).

### Before Contacting BMC Software

Before you contact BMC Software, have the following information available so that Customer Support can begin working on your problem immediately:

- product information
  - product name
  - product version (release number)
  - license number and password (trial or permanent)
- operating system and environment information
  - machine type
  - operating system type, version, and service pack or other maintenance level such as PUT or PTF
  - system hardware configuration
  - serial numbers
  - related software (database, application, and communication) including type, version, and service pack or maintenance level
- sequence of events leading to the problem
- commands and options that you used
- messages received (and the time and date that you received them)
  - product error messages
  - messages from the operating system, such as **file system full**
  - messages from related software

## Contents

<b>OVERVIEW</b> .....	<b>5</b>
<b>APPLICATION CLASSES HIERARCHY</b> .....	<b>6</b>
<b>SW_SENTRY</b> .....	<b>7</b>
<b>SW_APPLICATIONS</b> .....	<b>9</b>
<b>SW_DB_QUERIES</b> .....	<b>11</b>
<b>SW_FILES</b> .....	<b>13</b>
<b>SW_FILE_SECURITY</b> .....	<b>15</b>
<b>SW_FILESYSTEMS</b> .....	<b>16</b>
<b>SW_FOLDERS</b> .....	<b>17</b>
<b>SW_HTTP_REQUESTS</b> .....	<b>19</b>
<b>SW_WEB_FARM</b> .....	<b>21</b>
<b>SW_KMWATCH</b> .....	<b>22</b>
<b>SW_NTEVENTS</b> .....	<b>23</b>
<b>SW_NTPERFORMANCE</b> .....	<b>24</b>
<b>SW_NTSERVICES</b> .....	<b>25</b>
<b>SW_NUMBERS</b> .....	<b>26</b>
<b>SW_OSCOMMANDS</b> .....	<b>28</b>
<b>SW_PROCESSES</b> .....	<b>30</b>
<b>SW_SNMP_POLLING</b> .....	<b>32</b>
<b>SW_SNMP_TRAPS</b> .....	<b>34</b>
<b>SW_STRINGS</b> .....	<b>36</b>

## Overview

While out-of-the-box BMC Software® monitoring solutions are available for the most popular applications, lots of large and smaller companies are also using custom or “not-so-popular” applications. These applications, which are often critical applications because they are tied to the business, could only be monitored through a custom PATROL® Knowledge Module® until now.

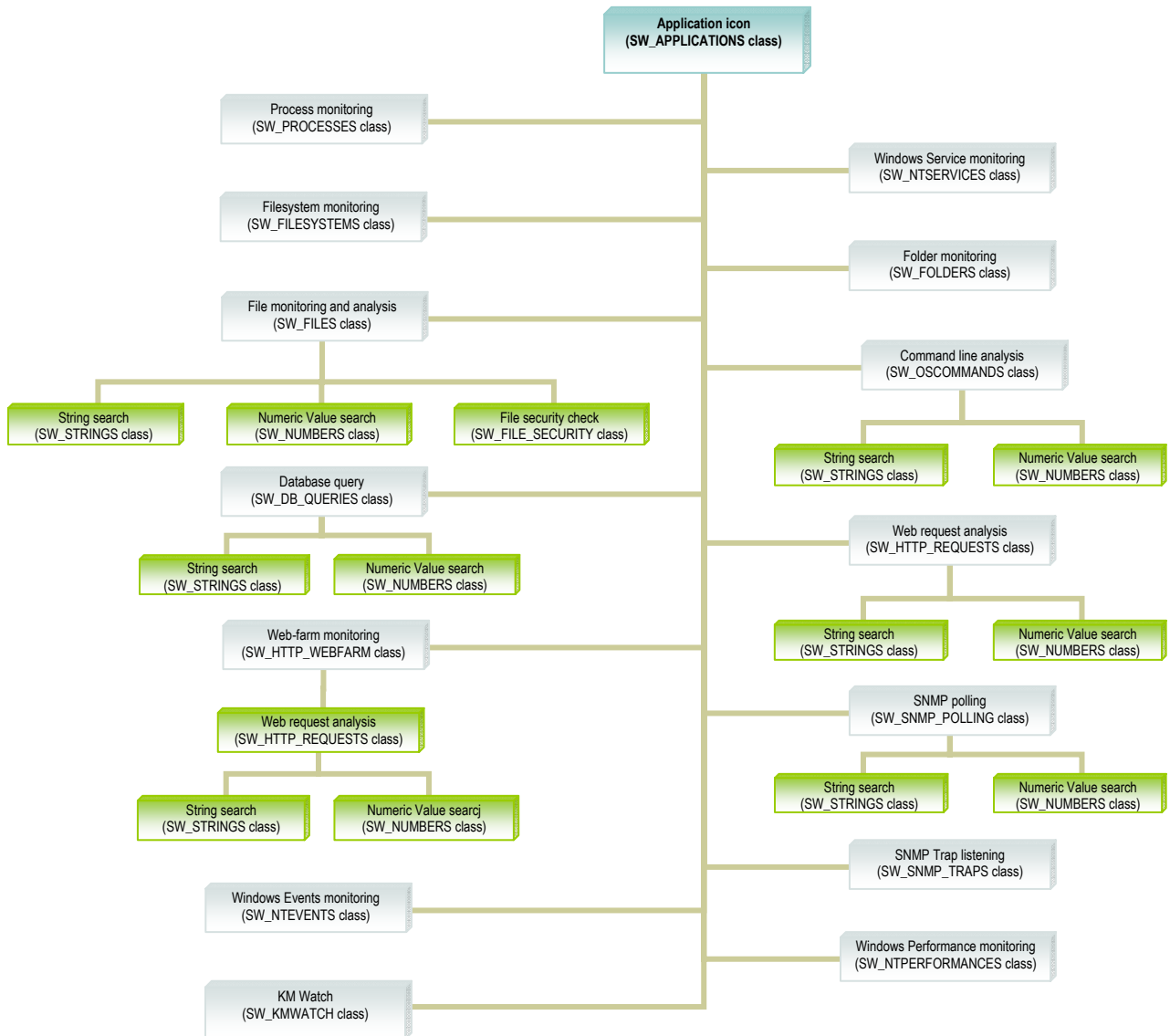
While developing a PATROL® KM is a relatively easy task, it still involves programming, project management, release and maintenance management skills that are scarce and costly.

BMC® Performance Manager® Monitoring Studio is a PATROL®-based solution that allows you to set up the monitoring of almost any application for which there is no out-of-the-box monitoring available, with no coding. In a few clicks, and thanks to intelligent wizards, you can cover up to 100% of your critical applications in your BMC Software® monitoring environment.

This document describes the PATROL application classes of this Knowledge Module, their parameters, Menu commands and Infobox information.

## Application classes hierarchy

The picture below represents the typical hierarchy of the Monitoring Studio objects in the PATROL console.



## SW\_SENTRY

One single instance of the SW\_SENTRY class is created and labeled “Monitoring Studio”. Once installed, it is the only visible icon under host icon in the PATROL Console. This icon gives you access to the various monitoring tools available in Monitoring Studio.

Monitoring objects will be placed under this “Monitoring Studio” icon by default. You can also use this icon to create new application/container icons in the PATROL Console tree.

### 1 - Parameters

Name	Description	Polling interval
<b>ApplicationColl</b>	Collector that checks if the application signature files are present, thus meaning that the application is present and should be monitored. The “signature files” are specified when setting up a new application monitoring.	2 minutes
<b>ExtraFileList</b>	Non-visible	2 minutes
<b>FileSystemColl</b>	File system collector.	2 minutes
<b>NTEventColl</b>	Windows Event collector.	2 minutes
<b>NTServiceColl</b>	Windows Service collector.	2 minutes
<b>ProColl</b>	Process Collector. Finds the processes that match the criteria and collects the performance information about the matching processes.	2 minutes

### 2 - Infobox

Name	Description
<b>Contact</b>	Contact information.
<b>Copyright</b>	Copyright information.
<b>Product</b>	Product name.
<b>Release</b>	Release date of this version of Monitoring Studio.
<b>Support</b>	Support information.
<b>Version</b>	Monitoring Studio version number.
<b>Web Site</b>	Web site address.

### 3 - Menu Commands

Menu Command	Description
<b>New &gt; Process monitoring...</b>	Starts the process monitoring wizard.
<b>New &gt; Windows service monitoring...</b>	Starts the Windows service monitoring wizard.

<b>Menu Command</b>	<b>Description</b>
<b>New &gt; File monitoring and analysis...</b>	Starts the file monitoring and analysis wizard.
<b>New &gt; Folder monitoring...</b>	Starts the folder monitoring wizard.
<b>New &gt; File system monitoring...</b>	Starts the file system monitoring wizard.
<b>New &gt; Command line analysis...</b>	Starts the command line execution and analysis wizard.
<b>New &gt; Database query analysis...</b>	Starts the database query analysis wizard.
<b>New &gt; Web request analysis...</b>	Starts the Web request analysis wizard.
<b>New &gt; Web-farm monitoring...</b>	Starts the Web-farm monitoring wizard.
<b>New &gt; SNMP polling...</b>	Starts the SNMP polling wizard.
<b>New &gt; SNMP Trap listening...</b>	Starts the SNMP trap listening wizard.
<b>New &gt; Windows Event monitoring...</b>	Starts the Windows EventLog monitoring wizard. (On Windows Agents only)
<b>New &gt; Windows Performance monitoring...</b>	Starts the Windows Performance counter monitoring wizard. (On Windows Agents only)
<b>New &gt; KM Watch...</b>	Starts the KM Watch wizard.
<b>New &gt; Application icon (container)...</b>	Starts the new application/container icon wizard.
<b>Paste</b>	Pastes the previously copied object under the Monitoring Studio icon.
<b>Tools &gt; Process Viewer</b>	Starts the process viewer tool.
<b>Tools &gt; Windows EventLog Reader</b>	Starts the Windows EventLog Reader tool. (On Windows Agents only)
<b>Tools &gt; SNMP Browser</b>	Starts the SNMP browser tool.
<b>Tools &gt; Real-time SNMP Trap listener</b>	Starts the real-time SNMP trap listener.
<b>Export &gt; Entire configuration to file</b>	Exports the whole Monitoring Studio configuration to a file.
<b>Export &gt; Application configuration to file</b>	Exports the configuration of one application to a file.
<b>Options &gt; Thresholds management...</b>	Shows the thresholds management options.
<b>Option &gt; Debug</b>	Shows the debug options.
<b>License...</b>	Shows the currently registered license keys and registers new license keys.
<b>About...</b>	Shows the version and general information about Monitoring Studio.

## SW\_APPLICATIONS

You can create SW\_APPLICATIONS instances (application/container icons) through the “New > Application icon (container)...” Menu Command of the “Monitoring Studio” icon. SW\_APPLICATIONS instances are used to group different monitoring tools configured to monitor a given application, device, or any other IT component.

SW\_APPLICATIONS instances may contain other SW\_APPLICATIONS instances (containers and sub-containers).

### 1 - Parameters

None.

### 2 - Infobox

Name	Description
<b>ID</b>	PATROL internal identifier of the application/container icon.
<b>Parent ID</b>	PATROL internal identifier of the parent icon.
<b>Application ID</b>	PATROL internal identifier of the root parent icon.
<b>First required file</b>	File whose presence is required to activate the monitoring of this application/container.
<b>Second required file</b>	File whose presence is required to activate the monitoring of this application/container.
<b>Third required file</b>	File whose presence is required to activate the monitoring of this application/container.
<b>Fourth required file</b>	File whose presence is required to activate the monitoring of this application/container.
<b>Contact</b>	Name or contact information of the person in charge of the application.
<b>Description</b>	Description of the application.
<b>Start command line</b>	Displays the command line that will be used to start the application by the “Manage > Start the application” Menu Command
<b>Stop command line</b>	Displays the command line that will be used to stop the application by the “Manage > Stop the application” Menu Command

### 3 - Menu Commands

Menu Command	Description
<b>New &gt; Process monitoring...</b>	Starts the process monitoring wizard.
<b>New &gt; Windows service monitoring...</b>	Starts the Windows service monitoring wizard.
<b>New &gt; File monitoring and analysis...</b>	Starts the file monitoring and analysis wizard.
<b>New &gt; Folder monitoring...</b>	Starts the folder monitoring wizard.
<b>New &gt; File system monitoring...</b>	Starts the file system monitoring wizard.

<b>Menu Command</b>	<b>Description</b>
<b>New &gt; Command line analysis...</b>	Starts the command line execution and analysis wizard.
<b>New &gt; Database query analysis...</b>	Starts the database query analysis wizard.
<b>New &gt; Web request analysis...</b>	Starts the Web request analysis wizard.
<b>New &gt; Web-farm monitoring...</b>	Starts the Web-farm monitoring wizard.
<b>New &gt; SNMP polling...</b>	Starts the SNMP polling wizard.
<b>New &gt; SNMP Trap listening...</b>	Starts the SNMP trap listening wizard.
<b>New &gt; Windows Event monitoring...</b>	Starts the Windows EventLog monitoring wizard. (On Windows Agents only)
<b>New &gt; Windows Performance monitoring...</b>	Starts the Windows Performance counter monitoring wizard. (On Windows Agents only)
<b>New &gt; KM Watch...</b>	Starts the KM Watch wizard.
<b>New &gt; Sub-container...</b>	Starts the new sub-container icon wizard.
<b>Edit...</b>	Opens the application/container wizard for this application/container.
<b>Set global Alert Actions</b>	Opens the Alert Actions wizard for the whole application/container, including all of its children monitoring objects. Only for root application/containers.
<b>Cut</b>	Cuts this application/container object.
<b>Copy</b>	Copies this application/container object.
<b>Paste</b>	Pastes a previously copied or cut object into this application/container.
<b>Delete</b>	Delete this application/container object as well as all of its children.
<b>Manage &gt; Start the application</b>	Execute the command line to start the monitored application (the command line has been specified in the application/container icon wizard)
<b>Manage &gt; Stop the application</b>	Execute the command line to stop the monitored application (the command line has been specified in the application/container icon wizard)
<b>Pause monitoring</b>	Suspend the monitoring of this application/container, including all of its children.
<b>Resume monitoring</b>	Resume the monitoring of this application/container, including all of its children.

## SW\_DB\_QUERIES

### 1 - Parameters

Name	Description	Value set by
<b>ConnectionStatus</b>	State of the server connection. <i>Unit: 0 = Ok, 1 = Alarm</i>	DbQueryColl every 2 minutes
<b>DbQueryColl</b>	Database Request collector. <i>Default polling interval: 2 minutes</i>	
<b>ExecutionTime</b>	SQL query execution time. <i>Unit: second(s)</i>	DbQueryColl every 2 minutes
<b>QueryStatus</b>	SQL query execution status. <i>Unit:0= OK, 1= ALARM</i>	DbQueryColl every 2 minutes
<b>ReturnOutput</b>	Output of the Database query execution, that will be parsed for String and Numeric value searches. <i>Unit: N/A</i>	DbQueryColl every 2 minutes

### 2 - Infobox

Name	Description
<b>ID</b>	PATROL internal identifier of the Database query analysis.
<b>Parent ID</b>	PATROL internal identifier of the parent application/container.
<b>Application ID</b>	PATROL internal identifier of the Database query's root application.
<b>Database Type</b>	Database type (Oracle or SQL Server).
<b>Instance/service name</b>	Displays the name of the instance.
<b>Database name</b>	Displays the database name.
<b>Connect as</b>	Login used to connect to the database server.
<b>SQL Query</b>	Displays the SQL Query that will be run.

### 3 - Menu Commands

Name	Description
<b>New &gt; Numeric value search</b>	Creates a new Numeric Value search for this Database Query analysis.
<b>New &gt; String search</b>	Creates a new String search for this Database Query analysis.
<b>Edit</b>	Edits the Database Query analysis settings.
<b>Set Alert Actions</b>	Adds specific Alert Actions to the Database Query analysis.
<b>Cut</b>	Cuts this Database Query object.

<b>Name</b>	<b>Description</b>
<b>Copy</b>	Copies this Database Query object.
<b>Paste</b>	Pastes a previously copied or cut String search or Numeric Value search object.
<b>Delete</b>	Deletes the Database Query analysis and all its dependent objects.
<b>Pause monitoring</b>	Pauses the Database Query analysis as well as all its dependent objects.
<b>Resume monitoring</b>	Resumes the Database Query analysis monitoring as well as that of all its dependent objects.
<b>Refresh parameters</b>	Refreshes all instance parameters of the SW_DB_REQUEST class.

## SW\_FILES

### 1 - Parameters

Name	Description	Value set by
<b>Exists</b>	Determines whether the file exists or not <i>Unit: 0 = Exists, 1 = Does not exist</i>	fileColl
<b>FileColl</b>	Collects information about the file Default polling interval: 2 minutes	
<b>GrowthPercentage</b>	File growth percentage <i>Unit: Percent per minute (%/min)</i>	fileColl
<b>GrowthSpeed</b>	File growth speed <i>Unit: Kilobytes per minute (KB/min)</i>	fileColl
<b>LastChanged</b>	Elapsed time since the File was modified <i>Unit: Minutes</i>	fileColl
<b>Size</b>	File size <i>Unit: Kilobytes (KB)</i>	fileColl

### 2 - Infobox

Name	Description
<b>ID</b>	PATROL internal identifier of the File monitoring.
<b>Parent ID</b>	PATROL internal identifier of the File's parent.
<b>Application ID</b>	PATROL internal identifier of the File's root application.
<b>File name &amp; path</b>	File name and path (with wildcards).
<b>Monitored parameters</b>	List of parameters that are currently being used for the File monitoring.
<b>Scan mode</b>	File scan mode (either "From start" or "From last position").
<b>Monitored file</b>	File name path of the file currently being monitored.

### 3 - Menu Commands

Name	Description
<b>New &gt; File security check</b>	Creates a new File security monitoring for the current File.
<b>New &gt; Numeric value search</b>	Creates a new Numeric Value search for the current File.
<b>New &gt; String Search</b>	Creates a new String search for the current File.
<b>Edit</b>	Edits the File monitoring settings.
<b>Set Alert Actions</b>	Adds specific Alert Actions to the File monitoring.
<b>Cut</b>	Cuts this File monitoring object.

<b>Name</b>	<b>Description</b>
<b>Copy</b>	Copies this File monitoring object.
<b>Paste</b>	Pastes a previously copied or cut String search or Numeric Value search.
<b>Delete</b>	Deletes the File monitoring and all its dependent objects.
<b>View file content</b>	Displays the File content.
<b>Restart Scan from start of file</b>	If a String or Numeric value Search is performed for this File, restart the File scan from the start of the File (only relevant to "LOG" Files).
<b>Pause monitoring</b>	Pauses the File monitoring as well as all its dependent objects.
<b>Resume monitoring</b>	Resumes the File monitoring as well as all its dependent objects.
<b>Refresh parameters</b>	Refreshes all instance parameters of the SW_FILES class.

# SW\_FILE\_SECURITY

## 1 - Parameters

Name	Description	Value set by
<b>AccessRightsCheck</b>	File's access right status. <i>Unit: 0 = Ok, 1 = File's access rights have changed</i>	fileSecurityColl
<b>GroupCheck</b>	File's group status. <i>Unit: 0 = Ok, 1 = File's group has changed</i>	fileSecurityColl
<b>Integrity</b>	File's integrity status (i.e. no changes made to the content) <i>Unit: 0 = Ok, 1 = File content has changed</i>	fileSecurityColl
<b>OwnerCheck</b>	File's owner status. <i>Unit: 0 = Ok, 1 = File's owner has changed</i>	fileSecurityColl
<b>fileSecurityColl</b>	Collects the security information about the monitored file. Default polling: 2 minutes	

## 2 - Infobox

Name	Description
<b>ID</b>	PATROL internal identifier of the File security check.
<b>Parent ID</b>	PATROL internal identifier of the File security check's parent.
<b>Application ID</b>	PATROL internal identifier of the File security check's root application.

## 3 - Menu Commands

Name	Description
<b>Edit</b>	Edits the File security monitoring settings.
<b>Set Alert Action</b>	Adds specific Alert Actions to the File security monitoring.
<b>Delete</b>	Deletes the File security monitoring and all its dependent objects.
<b>Cut</b>	Cuts this File security monitoring object.
<b>Copy</b>	Copies this File security monitoring object.
<b>Pause monitoring</b>	Pauses the File security monitoring.
<b>Resume monitoring</b>	Resumes the File security monitoring.
<b>Refresh parameters</b>	Refreshes all instance parameters of the SW_FILE_SECURITY application class.

## SW\_FILESYSTEMS

### 1 - Parameters

Name	Description	Value set by
<b>FreeMegabytes</b>	File system free space. Unit: Megabytes (MB)	SW_SENTRY/FileSystemColl every 2 minutes
<b>FreeSpacePercent</b>	File system free space. Unit: Percent (%)	SW_SENTRY/FileSystemColl every 2 minutes
<b>UsedSpaceGrowthSpeed</b>	File system used space growth speed Unit: Megabytes per hour (MB/h)	SW_SENTRY/FileSystemColl every 2 minutes
<b>UsedSpaceGrowthPercentage</b>	File system used space growth percentage. Unit: Percentage per hour (%/h)	SW_SENTRY/FileSystemColl every 2 minutes

### 2 - Infobox

Name	Description
<b>ID</b>	PATROL internal identifier of the File systems monitoring.
<b>Parent ID</b>	PATROL internal identifier of the File systems' parent.
<b>Application ID</b>	PATROL internal identifier of the file systems' root application.
<b>File System object</b>	File System object monitored.

### 3 - Menu Commands

Name	Description
<b>Edit</b>	Edits the File system monitoring settings.
<b>Set Alert Action</b>	Adds specific Alert Actions to the File systems monitoring.
<b>Cut</b>	Cuts this File system monitoring object.
<b>Copy</b>	Copies this File system monitoring object.
<b>Delete</b>	Deletes the File systems monitoring and all its dependent objects.
<b>Pause monitoring</b>	Pauses the File systems monitoring.
<b>Resume monitoring</b>	Resumes the File systems monitoring.
<b>Refresh parameters</b>	Refreshes all instance parameters of the SW_FILESYSTEMS application class.

## SW\_FOLDERS

### 1 - Parameters

<b>Name</b>	<b>Description</b>	<b>Value set by</b>
<b>DeletedFileCount</b>	Number of deleted files per minute. <i>Unit: File(s) per minute (File(s)/min)</i>	FolderColl
<b>FileCount</b>	Number of files in the folder and subfolders if specified. <i>Unit: file(s)</i>	FolderColl
<b>FolderColl</b>	Folder collector. <i>Default polling interval: 2 minutes</i>	
<b>FolderSize</b>	Folder size (include subfolders if specified) in MB. <i>Unit: Megabyte(s) (MB)</i>	FolderColl
<b>GrowthPercentage</b>	Percentage of the folder size growth per minute. <i>Unit: Percent per minute (%/min)</i>	FolderColl
<b>GrowthSpeed</b>	Folder size growth per minute. <i>Unit: Kilobyte(s) per minute (KB/min)</i>	FolderColl
<b>LastModifiedFileElapsedTime</b>	Elapsed time since the last modification of any file in this folder. <i>Unit: Minute(s) (min)</i>	FolderColl
<b>ModifiedFileCount</b>	Number of modified files per minute. <i>Unit: File(s) per minute (File(s)/min)</i>	FolderColl
<b>NewFileCount</b>	Number of new files per minute. <i>Unit: Displays the number of new files per minute</i>	FolderColl
<b>OldestModifiedFileElapsedTime</b>	Elapsed time since the oldest modification of any file in this folder or sub-folder. <i>Unit: Minute(s) (min)</i>	FolderColl

### 2 - Infobox

<b>Name</b>	<b>Description</b>
<b>ID</b>	PATROL internal identifier of the Folder monitoring.
<b>Parent ID</b>	PATROL internal identifier of the Folder's parent.
<b>Application ID</b>	PATROL internal identifier of the Folder's root application.
<b>Folder</b>	Path of the monitored folder.
<b>Include subfolder</b>	Displays whether subfolders are monitored or not.

### 3 - Menu Commands

<b>Name</b>	<b>Description</b>
<b>Edit</b>	Edits the Folder monitoring settings.
<b>Set Alert Actions</b>	Adds specific Alert Actions to the Folder monitoring.
<b>Cut</b>	Cuts this folder monitoring object.
<b>Copy</b>	Copies this folder monitoring object.
<b>Delete</b>	Deletes the Folder monitoring.
<b>Pause monitoring</b>	Pauses the Folder monitoring.
<b>Resume monitoring</b>	Resumes the Folder monitoring.
<b>Refresh parameters</b>	Refreshes all instance parameters of the SW_FOLDERS class.

## SW\_HTTP\_REQUESTS

### 1 - Parameters

Name	Description	Value set by
<b>ExecutionTime</b>	Time taken by the Web request to execute. <i>Unit: Second (s)</i>	HttpRequestColl
<b>HttpRequestColl</b>	Web Request collector. <i>Default polling interval: 2 minutes</i>	
<b>HTTPStatusCode</b>	HTTP Response Status code <i>Unit: 200 = OK, 404 = error, ...</i>	HttpRequestColl
<b>ReturnOutput</b>	HTTP Response (including or not headers and HTML tags, depending on the selected options)	HttpRequestColl
<b>ServerConnectionState</b>	Server connection status <i>Unit: 0 = Ok, 1 = Alarm</i>	HttpRequestColl
<b>Status</b>	Web Request status. <i>Unit: 0 = Ok, 1 = Warning, 2 = Alarm</i>	HttpRequestColl

### 2 - Infobox

Name	Description
<b>ID</b>	PATROL internal identifier of the HTTP Request analysis.
<b>Parent ID</b>	PATROL internal identifier of the HTTP Request's parent.
<b>Application ID</b>	PATROL internal identifier of the HTTP Request's root application.
<b>Used HTTP method</b>	HTTP method that is used for this HTTP Request analysis.

### 3 - Menu Commands

Name	Description
<b>New &gt; Numeric value search</b>	Creates a new Numeric Value search for this HTTP Request.
<b>New &gt; String search</b>	Creates a new String search for this HTTP Request.
<b>Edit</b>	Edits the HTP Request monitoring settings.
<b>Set Alert Actions</b>	Adds specific Alert Actions to the HTTP Request analysis.
<b>Cut</b>	Cuts this HTTP Request object.
<b>Copy</b>	Copies this HTTP Request object.
<b>Paste</b>	Pastes a previously copied or cut String search or Numeric Value search.
<b>Delete</b>	Deletes the HTTP Request analysis and all its dependent objects.
<b>Pause monitoring</b>	Pauses the HTTP Request analysis as well as all its dependent objects.

<b>Name</b>	<b>Description</b>
<b>Resume monitoring</b>	Resumes the HTTP Request monitoring as well as all its dependent objects.
<b>Refresh parameters</b>	Refreshes all instance parameters of the SW_HTTP_REQUESTS class.

## SW\_WEB\_FARM

### 1 - Parameters

Name	Description	Value set by
<b>OperationalServerPercent</b>	Number of servers that are operational. <i>Unit: Server (s)</i>	httpWebFarmColl
<b>OperationalServerCount</b>	Percentage of servers that are operational. <i>Unit: Percent</i>	httpWebFarmColl
<b>httpWebFarmColl</b>	HTTP Web-farm collector <i>Polling interval: 1 minute</i>	

### 2 - Infobox

Name	Description
<b>ID</b>	PATROL internal identifier of the Web-farm monitoring.
<b>Parent ID</b>	PATROL internal identifier of the Web-farm monitoring's parent.
<b>Application ID</b>	PATROL internal identifier of the Web-farm monitoring's root application.

### 3 - Menu Commands

Name	Description
<b>New &gt; String search</b>	Creates a new String search for this Web-farm monitoring.
<b>New &gt; Numeric value search</b>	Creates a new Numeric Value search for this Web-farm monitoring.
<b>Edit</b>	Edits the Web-farm monitoring settings.
<b>Add hosts</b>	Adds new hosts to the Web-farm monitoring. A new Web Request monitoring will be created for each host added.
<b>Set Alert Actions</b>	Adds specific Alert Actions to the Web-farm monitoring.
<b>Cut</b>	Cuts this Web-farm monitoring object.
<b>Copy</b>	Copies this Web-farm monitoring object.
<b>Paste</b>	Pastes a previously copied or cut String search or Numeric Value search.
<b>Delete</b>	Deletes the Web-farm monitoring and all its dependent objects.
<b>Pause monitoring</b>	Pauses the Web-farm monitoring as well as all its dependent objects.
<b>Resume monitoring</b>	Resumes the Web-farm monitoring as well as all its dependent objects.
<b>Refresh parameters</b>	Refreshes all instance parameters of the Web-farm monitoring.

## SW\_KMWATCH

### 1 - Parameters

Name	Description	Value set by
<b>KMWatchColl</b>	Collects values by getting the information from the monitored parameter and setting the KM Watch value parameter with this value <i>Default pooling interval: 1 minute</i>	
<b>Value</b>	Value of the parameter that is being monitored. <i>Unit: Depend on the parameter.</i>	KMWatchColl

### 2 - Infobox

Name	Description
<b>ID</b>	PATROL internal identifier of the KM Watch monitoring.
<b>Parent ID</b>	PATROL internal identifier of the KM Watch's parent.
<b>Application ID</b>	PATROL internal identifier of the KM Watch's root application.
<b>Class</b>	Class of the parameter that is being monitored.
<b>Instance</b>	Instance of the parameter that is being monitored.
<b>Parameter</b>	Name of the parameter that is being monitored.
<b>Scale</b>	Scale used for the parameter's value.

### 3 - Menu Commands

Name	Description
<b>Edit</b>	Edits the KM Watch monitoring settings.
<b>Set Alert Actions</b>	Adds specific Alert Actions to the KM Watch monitoring.
<b>Cut</b>	Cuts this KM Watch object.
<b>Copy</b>	Copies this KM Watch object.
<b>Delete</b>	Deletes the KM Watch monitoring.
<b>Pause monitoring</b>	Pauses the KM Watch monitoring.
<b>Resume monitoring</b>	Resumes the KM Watch monitoring.
<b>Refresh parameters</b>	Refreshes all instance parameters of the SW_KMWATCH class.

# SW\_NTEVENTS

## 1 - Parameters

Name	Description	Value set by
<b>MatchingEventCount</b>	Number of matching Windows events. <i>Unit: Event</i>	SW_SENTRY/NTEventColl every 2 minutes
<b>MatchingEventRate</b>	Rate of matching Windows events. <i>Unit: Event/minute</i>	SW_SENTRY/NTEventColl every 2 minutes

## 2 - Infobox

Name	Description
<b>ID</b>	PATROL internal identifier of the Windows Event monitoring.
<b>Parent ID</b>	PATROL internal identifier of the Windows Event's parent.
<b>Application ID</b>	PATROL internal identifier of the Windows Event's root application.
<b>Event Log</b>	Indicates which EventLog is searched.
<b>Event source</b>	Source of the event to be searched for.
<b>Event ID</b>	ID of the event to be searched for.
<b>Acknowledging NT Event</b>	Is the auto-acknowledgment activated?
<b>Acknowledge</b>	What has to be acknowledged: one event or all events?
<b>Timeout</b>	Time after which a matching Windows event is acknowledged.
<b>Run Alert Actions</b>	Whether Alert Actions are executed for each match.

## 3 - Menu Commands

Name	Description
<b>Edit</b>	Edits the Windows Event monitoring settings.
<b>Set Alert Actions</b>	Adds specific Alert Actions to the Windows Event monitoring.
<b>Cut</b>	Cuts this Windows Event monitoring object.
<b>Copy</b>	Copies this Windows Event monitoring object.
<b>Delete</b>	Deletes the Windows Event monitoring.
<b>Pause monitoring</b>	Pauses the Windows Event monitoring.
<b>Resume monitoring</b>	Resumes the Windows Event monitoring.
<b>Refresh parameters</b>	Refreshes all instance parameters of the SW_NTEVENTS class.

# SW\_NTPERFORMANCE

## 1 - Parameters

Name	Description	Value set by
<b>NTPerformanceColl</b>	Collects Windows Performance counter values. <i>Default Polling Interval: 2 minutes</i>	
<b>Value</b>	Value of the monitored Windows Performance counter. <i>Unit: Depend on the parameter</i>	NTPerformanceColl

## 2 - Infobox

Name	Description
<b>ID</b>	PATROL internal identifier of the Windows Performance monitoring.
<b>Parent ID</b>	PATROL internal identifier of the Windows Performance's parent.
<b>Application ID</b>	PATROL internal identifier of the Windows Performance's root application.
<b>Performance object</b>	Name of the Windows Performance object that is read.
<b>Counter</b>	Name of the Windows Performance counter that is read.
<b>Instances</b>	Selected Windows Performance instances.
<b>Value Type</b>	How the value is calculated (average, maximum, etc.) when more than one instance was selected.
<b>Scale</b>	Scale used (the original performance value is divided by this number).

## 3 - Menu Commands

Name	Description
<b>Edit</b>	Edits the Windows Performance monitoring settings.
<b>Set Alert Actions</b>	Adds specific Alert Actions to the Windows Performance monitoring.
<b>Cut</b>	Cuts this Windows Performance monitoring object.
<b>Copy</b>	Copies this Windows Performance monitoring object.
<b>Delete</b>	Deletes the Windows Performance monitoring.
<b>Pause monitoring</b>	Pauses the Windows Performance monitoring.
<b>Resume monitoring</b>	Resumes the Windows Performance monitoring.
<b>Refresh parameters</b>	Refreshes all instance parameters of the SW_NTPERFORMANCE class.

## SW\_NTSERVICES

### 1 - Parameters

Name	Description	Value set by
<b>Status</b>	Status of the Windows Service. <i>Unit: 0 = Started, 1 = Intermediate state, 2 = Stopped.</i>	SW_SENTRY/NTServiceColl every 2 minutes.

### 2 - Infobox

Name	Description
<b>ID</b>	PATROL internal identifier of the Windows Service monitoring.
<b>Application ID</b>	PATROL internal identifier of the Windows Service's parent.
<b>Parent ID</b>	PATROL internal identifier of the Windows Service's root application.
<b>Service name</b>	Name of the service that is monitored.

### 3 - Menu Commands

Name	Description
<b>Edit</b>	Edits the Windows Service monitoring settings.
<b>Set Alert Actions</b>	Adds specific Alert Actions to the Windows Service monitoring.
<b>Cut</b>	Cuts this Windows Service monitoring object.
<b>Copy</b>	Copies this Windows Service monitoring object.
<b>Delete</b>	Deletes this Windows Service monitoring object.
<b>Pause monitoring</b>	Pauses this Windows Service monitoring.
<b>Resume monitoring</b>	Resumes this Windows Service monitoring.
<b>Refresh parameters</b>	Refreshes all instance parameters of the SW_NTSERVICES class.

# SW\_NUMBERS

## 1 - Parameters

Name	Description	Value set by
<b>Value</b>	Value of the searched Numeric value (no value will be given if no number is found).	The collector of the parent's object. Example: the collect for an instance of SW_NUMBERS that is attached to a file is performed by the fileColl collector.

## 2 - Infobox

Name	Description
<b>ID</b>	PATROL internal identifier of the Numeric Value search.
<b>Parent ID</b>	PATROL internal identifier of the Numeric Value search's parent.
<b>Application ID</b>	PATROL internal identifier of the Numeric Value search's root application.
<b>Parent Type</b>	Type of the parent (File, OS Command, etc.).
<b>Line Mode</b>	Method used to select lines to search for the numeric value.
<b>Column Mode</b>	Method chosen to search for the numeric value in the line.
<b>Parameter Type</b>	Value taken into account if several numeric values are found (last one, average, total, minimum or maximum).
<b>Line Numbers</b>	Line numeric value in which the Numeric Value will be searched.
<b>Regular Expression</b>	Regular expression used to select the lines where the Numeric Value will be searched
<b>Skip blank Lines</b>	Indicates whether or not blank lines are skipped when searching for the Numeric Value.
<b>After/Before</b>	Searches for the Numeric Value either after or before the specified string.
<b>Specified String</b>	Searches for the Numeric Value before or after this specified string.
<b>Character Offset</b>	Character offset where the Numeric Value is searched for.
<b>Field Number</b>	Number of the field in which the Numeric Value will be searched for.
<b>Field Separators</b>	Characters that separates the fields in a text line.
<b>Unique Separator</b>	Considers consecutives separators as a unique separator.

## 3 - Menu Commands

Name	Description
<b>Edit</b>	Edits the Numeric value search settings.
<b>Set Alert Actions</b>	Adds specific Alert Actions to the Numeric value search.
<b>Cut</b>	Cuts this Numeric Value search object.

<b>Name</b>	<b>Description</b>
<b>Copy</b>	Copies this Numeric Value search object.
<b>Delete</b>	Deletes the Numeric value search.
<b>Pause monitoring</b>	Pauses the Numeric value search.
<b>Resume monitoring</b>	Resumes the Numeric value search.

## SW\_OSCOMMANDS

### 1 - Parameters

Name	Description	Value set by
<b>ExecutionStatus</b>	Status of the command line execution <i>Unit: 0 = executed successfully, 1 = error while executing the OS command</i>	OSCommandColl
<b>ExecutionTime</b>	Time taken by the command line to run. <i>Unit: Seconds</i>	OSCommandColl
<b>OSCommandColl</b>	Executes the Command Line and analyze its output.	
<b>ReturnOutput</b>	Displays the returned output of the Command Line <i>Unit: N/A</i>	OSCommandColl

### 2 - Infobox

Name	Description
<b>ID</b>	PATROL internal identifier of the Command Line execution.
<b>Parent ID</b>	PATROL internal identifier of the Command Line's parent.
<b>Application ID</b>	PATROL internal identifier of the Command Line's root application.
<b>OS command</b>	Command line that is given to the OS to execute.
<b>Timeout</b>	Maximum execution time before timeout.
<b>Username</b>	The command line is executed with this username.

### 3 - Menu Commands

Name	Description
<b>New &gt; Numeric value search</b>	Creates a new Numeric Value search for this Command Line.
<b>New &gt; String search</b>	Creates a new String search for this Command Line.
<b>Edit</b>	Edits the Command Line analysis settings.
<b>Set Alert Actions</b>	Adds specific Alert Actions to the Command Line analysis.
<b>Cut</b>	Cuts this Command Line analysis object.
<b>Copy</b>	Copies this Command Line analysis object.
<b>Paste</b>	Pastes a previously copied or cut String search or Numeric Value search.
<b>Delete</b>	Deletes the Command Line analysis and all its dependent objects.
<b>Pause monitoring</b>	Pauses the Command Line analysis as well as all its dependent objects.
<b>Resume monitoring</b>	Resumes the Command Line analysis as well as all its dependent objects.

<b>Name</b>	<b>Description</b>
<b>Refresh parameters</b>	Re-execute the Command Line (if needed) and refresh all parameters. All dependent objects will be refreshed as well (SW_STRINGS and SW_NUMBERS instances)

# SW\_PROCESSES

## 1 - Parameters

Name	Description	Value set by
<b>ChildCount</b>	Displays the number of children of the matching process(es). <i>Unit: Processes</i>	SW_SENTRY/proColl
<b>Count</b>	Displays the number of processes that match the criteria. <i>Unit: Processes</i>	SW_SENTRY/proColl
<b>HandleCount (NT only)</b>	Displays the number of handles opened by the matching process(es). <i>Unit: Handle</i>	SW_SENTRY/proColl
<b>PageFaultsPerSec (NT only)</b>	Displays the number of page faults per second caused by the matching process(es). <i>Unit: Page faults/sec</i>	SW_SENTRY/proColl
<b>PageFileBytes (NT only)</b>	Displays the pagefile used by the matching process(es). <i>Unit : Megabytes</i>	SW_SENTRY/proColl
<b>PrivateBytes (NT only)</b>	Displays the private bytes of the matching process(es). <i>Unit: Megabytes</i>	SW_SENTRY/proColl
<b>ProcessorTime</b>	Displays the processor time percent used by the matching process(es). <i>Unit: Percentage (%)</i>	SW_SENTRY/proColl
<b>ThreadCount (NT only)</b>	Displays the number of threads of the matching process(es). <i>Unit: Threads</i>	SW_SENTRY/proColl
<b>VirtualBytes</b>	Displays the virtual memory used by the matching process(es). <i>Unit: Megabytes.</i>	SW_SENTRY/proColl
<b>WorkingSet (NT only)</b>	Displays the working set size of the matching process(es). <i>Unit: Megabytes</i>	SW_SENTRY/proColl

## 2 - Infobox

Name	Description
<b>Object ID</b>	PATROL internal identifier of the Process monitoring.
<b>Object Type</b>	Type of the object (Process).
<b>Object Class</b>	Class of the object (SW_PROCESSES).
<b>Parent ID</b>	PATROL internal identifier of the Process' parent.
<b>Application ID</b>	PATROL internal identifier of the Process' root application.

### 3 - Menu Commands

<b>Name</b>	<b>Description</b>
<b>Edit</b>	Edits the Process monitoring settings.
<b>Set Alert Actions</b>	Adds specific Alert Actions to the Process monitoring.
<b>Cut</b>	Cuts this Process monitoring object.
<b>Copy</b>	Copies this Process monitoring object.
<b>Delete</b>	Deletes the Process monitoring.
<b>Pause monitoring</b>	Pauses the Process monitoring.
<b>Resume monitoring</b>	Resumes the Process monitoring.
<b>Refresh parameters</b>	Refreshes all instance parameters of the SW_PROCESSES class.

## SW\_SNMP\_POLLING

### 1 - Parameters

Name	Description	Value set by
<b>Content</b>	Content of the polled SNMP variable. Note: Only applicable to variables of string type. Unit: N/A	SNMPPollingColl
<b>SNMPPollingColl</b>	Polls the SNMP variable and collects the information received.	
<b>Status</b>	Status of the SNMP Polling. Unit: 0 = working, 1 = a problem occurred	SNMPPollingColl
<b>Value</b>	Value of the SNMP variable. Note: Only applicable to variables of numeric type Unit: Varies	SNMPPollingColl

### 2 - Infobox

Name	Description
<b>ID</b>	PATROL internal identifier of the SNMP Polling.
<b>Parent ID</b>	PATROL internal identifier of the SNMP Polling's parent.
<b>Application ID</b>	PATROL internal identifier of the SNMP Polling's root application.
<b>OID</b>	OID that is polled.
<b>OID type</b>	Type of the value of the selected OID (numeric or string).
<b>Host</b>	Host name where the SNMP agent is running.
<b>Port</b>	Port used to connect to the SNMP agent.
<b>Community</b>	Community used to connect to the SNMP agent.

### 3 - Menu Commands

Name	Description
<b>New &gt; Numeric value search</b>	Creates a new Numeric Value search for this SNMP Polling.
<b>New &gt; String search</b>	Creates a new String search for this SNMP Polling.
<b>Edit</b>	Edits the SNMP Polling settings.
<b>Set Alert Actions</b>	Adds specific Alert Actions to the SNMP Polling.
<b>Cut</b>	Cut this SNMP Polling object.
<b>Copy</b>	Copies this SNMP Polling object.
<b>Paste</b>	Pastes a previously copied or cut String search or Numeric Value search.
<b>Delete</b>	Deletes the SNMP Polling and all its dependent objects.

<b>Name</b>	<b>Description</b>
<b>Pause monitoring</b>	Pauses the SNMP Polling as well as all its dependent objects.
<b>Resume monitoring</b>	Resumes the SNMP Polling as well as all its dependent objects.
<b>Refresh Parameter</b>	Re-poll the OID and refresh all parameters. All dependent objects will be refreshed as well (SW_STRINGS and SW_NUMBERS instances)

## SW\_SNMP\_TRAPS

### 1 - Parameters

Name	Description	Value set by
<b>MatchingTrapRate</b>	Number of SNMP traps matching the search. <i>Unit:Trap</i>	SNMPtrapColl
<b>MatchingTrapCount</b>	Number of matching SNMP traps per minute. <i>Unit: Trap</i>	SNMPtrapColl and a detached PSL process when a trap is received.
<b>SNMPTrapColl</b>	The SNMP trap collector is a detached PSL process launched at the start of BMC® Performance Manager Monitoring Studio. This process waits for SNMP Traps and analyzes traps as it receives them. <i>Default polling interval: 2 minutes</i>	

### 2 - Infobox

Name	Description
<b>ID</b>	PATROL internal identifier of the SNMP Trap listening.
<b>Parent ID</b>	PATROL internal identifier of the SNMP Trap listening's parent.
<b>Application ID</b>	PATROL internal identifier of the SNMP Trap listening's root application.
<b>Source IP</b>	IP address of the SNMP agent that raises the traps.
<b>Community</b>	Community used to listen to traps.
<b>Enterprise ID</b>	Enterprise ID of the SNMP agent that raises the traps.
<b>Trap Number</b>	Number of the searched trap.
<b>OID 1</b>	OID of the first varBind of the searched traps.
<b>String 1</b>	Searched string in the first varBind.
<b>OID 2</b>	OID of the second varBind of the searched traps.
<b>String 2</b>	Searched string in the second varBind.
<b>Acknowledging Trap Number</b>	Number of the trap that will acknowledge this trap search.
<b>Acknowledging OID 1</b>	OID of the first varBind of the trap that will acknowledge this trap search.
<b>Acknowledging String 1</b>	Searched string in the first varBind of the acknowledging trap.
<b>Acknowledging OID 2</b>	OID of the second varBind of the trap that will acknowledge this trap search.
<b>Acknowledging String 2</b>	Searched string in the second varBind of the acknowledging trap.
<b>Timeout</b>	Timeout for auto-acknowledgment.

<b>Name</b>	<b>Description</b>
<b>Run Alert Actions</b>	Indicates when Alert Actions should be executed.

### 3 - Menu Commands

<b>Name</b>	<b>Description</b>
<b>Edit</b>	Edits the SNMP Trap listening settings.
<b>Set Alert Actions</b>	Adds specific Alert Actions to the SNMP Trap listening.
<b>Cut</b>	Cuts this SNMP Trap listening object.
<b>Copy</b>	Copies this SNMP Trap listening object.
<b>Delete</b>	Deletes the SNMP Trap listening.
<b>Pause monitoring</b>	Pauses the SNMP Trap listening.
<b>Resume monitoring</b>	Resumes the SNMP Trap listening.

## SW\_STRINGS

### 1 - Parameters

Name	Description	Value set by
<b>LastMatchingLines</b>	Lines matching the String search. <i>Unit: N/A</i> Note: The number of lines displayed can be changed to a custom value by adding the variable "/MASAI/SENTRY8/LastMachingLinesNumber" with the proper line number in the PATROL Agent configuration. Default: the 10 last matching lines are displayed	The collector of the parent object (SW_FILES, SW_OSCOMMANDS, etc.)
<b>MatchingLineCount</b>	Number of lines matching the String search <i>Unit: Line</i>	The collector of the parent object (SW_FILES, SW_OSCOMMANDS, etc.)
<b>MatchingLineRate</b>	Number of lines matching the String search per minute <i>Unit: Line/minute</i> The MatchingLineRate parameter is only activated for String searches in LOG files and in "never-ending" command lines.	The collector of the parent object (SW_FILES, SW_OSCOMMANDS, etc.)

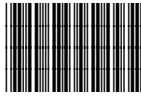
### 2 - Infobox

Name	Description
<b>ID</b>	PATROL internal identifier of the String search.
<b>Parent ID</b>	PATROL internal identifier of the String search's parent.
<b>Application ID</b>	PATROL internal identifier of the String search's root application.
<b>Parent type</b>	Type of the parent (File, OSCOMMAND, etc.).
<b>Search</b>	Search mode.
<b>Lines</b>	Lines that are searched.
<b>Acknowledge String</b>	String that auto-acknowledges this string search.
<b>Acknowledge</b>	Is the auto-acknowledgment enabled.
<b>Timeout</b>	Timeout for the auto-acknowledgment.
<b>Run Alert Actions</b>	When Alert Actions have to be executed.

### 3 - Menu Commands

Name	Description
<b>Edit</b>	Edits the String search settings.

<b>Name</b>	<b>Description</b>
<b>Set Alert Actions</b>	Adds specific Alert Actions to the String search.
<b>Cut</b>	Cuts this String search object.
<b>Copy</b>	Copies this String search object.
<b>Delete</b>	Deletes the String search.
<b>Acknowledge all and reset</b>	Acknowledge all alerts for this object. The MatchingLineCount parameter is set to zero.
<b>Pause monitoring</b>	Pauses the String search.
<b>Resume monitoring</b>	Resumes the String search.



\*60109\*