

# Monitoring Studio KM for PATROL® Reference Guide



## Supporting

Monitoring Studio KM for PATROL

Version 8.5.02

July 2008

## Customer Support

You can obtain technical support by using the Support page on the Sentry Software Web site or by contacting Customer Support by telephone or e-mail. To expedite your inquiry, please see the section “Before Contacting Sentry Software” given below.

### Support Web Site

You can obtain technical support from Sentry Software 24 hours a day, 7 days a week at <http://www.sentrysoftware.net/support.asp>. From this Web site, you can

- register a case online
- report a problem or ask a question
- read overviews about support services and programs that Sentry Software offers
- find the most current information about Sentry Software products
- download trial versions of products
- download product documentation
- consult the Online Technical Library that provides detailed product documentation

### Support by Telephone or E-mail

To find telephone and e-mail contact information for the Sentry Software support center please, refer to the Contact Us section of the Support page on the Sentry Software Web site at <http://www.sentrysoftware.net/support.asp>

### Before Contacting Sentry Software

Before you contact Sentry Software, please ensure you have the following information available so that Customer Support can begin working on your problem immediately:

#### *Product information*

- product name
- product version (release number)
- license number and password (trial or permanent)

#### *Operating system and environment information*

- machine type
- operating system type, version, and service pack or other maintenance level such as PUT or PTF
- system hardware configuration
- serial numbers
- related software (database, application, and communication) including type, version, and service pack or maintenance level

#### *Sequence of events leading to the problem*

#### *Commands and options that you used*

#### *Messages received (and the time and date that you received them)*

- product error messages
- messages from the operating system, such as file system full
- messages from related software



## Table of Contents

|                                      |          |
|--------------------------------------|----------|
| <b>OVERVIEW .....</b>                | <b>4</b> |
| 1. LIST OF APPLICATION CLASSES.....  | 5        |
| 2. HIERARCHY .....                   | 6        |
| <b>THE APPLICATION CLASSES .....</b> | <b>7</b> |
| 1. SW_APPLICATIONS .....             | 8        |
| 2. SW_DB_QUERIES.....                | 10       |
| 3. SW_FILES .....                    | 12       |
| 4. SW_FILE_SECURITY.....             | 14       |
| 5. SW_FILESYSTEMS .....              | 15       |
| 6. SW_FOLDERS .....                  | 16       |
| 7. SW_HTTP_REQUESTS .....            | 18       |
| 8. SW_HTTP_WEBFARM.....              | 20       |
| 9. SW_JMX.....                       | 21       |
| 10. SW_KMWATCH.....                  | 23       |
| 11. SW_NTEVENTS.....                 | 24       |
| 12. SW_NTPERFORMANCE .....           | 25       |
| 13. SW_NTSERVICES .....              | 26       |
| 14. SW_NT_WMI .....                  | 27       |
| 15. SW_NUMBERS .....                 | 29       |
| 16. SW_OSCOMMANDS .....              | 31       |
| 17. SW_PROCESSES .....               | 33       |
| 18. SW_SENTRY .....                  | 35       |
| 19. SW_SNMP_POLLING.....             | 37       |
| 20. SW_SNMP_TRAPS .....              | 39       |
| 21. SW_STRINGS.....                  | 41       |
| 22. SW_TRANSFORM.....                | 43       |

## Overview

---

While out-of-the-box BMC Software monitoring solutions are available for the most common applications, companies often also need to use various custom or in-house applications.

Until recently, monitoring these custom applications, often critical, as they are intrinsically linked to the business, was feasible only through a custom PATROL KM. Developing a PATROL KM, although not an impossible task, inevitably involves a lot of programming, project management, release and maintenance management skills, all of which are time and resource-intensive.

Monitoring Studio KM for PATROL allows you to set up the monitoring, without any coding, of almost any application, device or IT component for which there is no out-of-the-box monitoring solution available. It also enables you to consolidate diverse monitoring needs through a single solution.

In a few clicks, and thanks to intuitive wizards, you can cover up to 100% of your critical applications within your BMC Software monitoring environment.

This document describes the application classes of BMC® Performance Manager Monitoring Studio. It takes you through each of the 22 application classes and describes the parameters discovered and the menu commands available.

The documentation for Monitoring Studio KM for PATROL consists of:

1. Installation Guide – for information on how to install and run the product.
2. User Guide – for a detailed view on how to use the product.
3. Reference Guide – current document
4. Release Notes – for a summary of the key features and changes in the product.

For convenience, Monitoring Studio KM for PATROL will be referred to as *Monitoring Studio* within the product documentation.

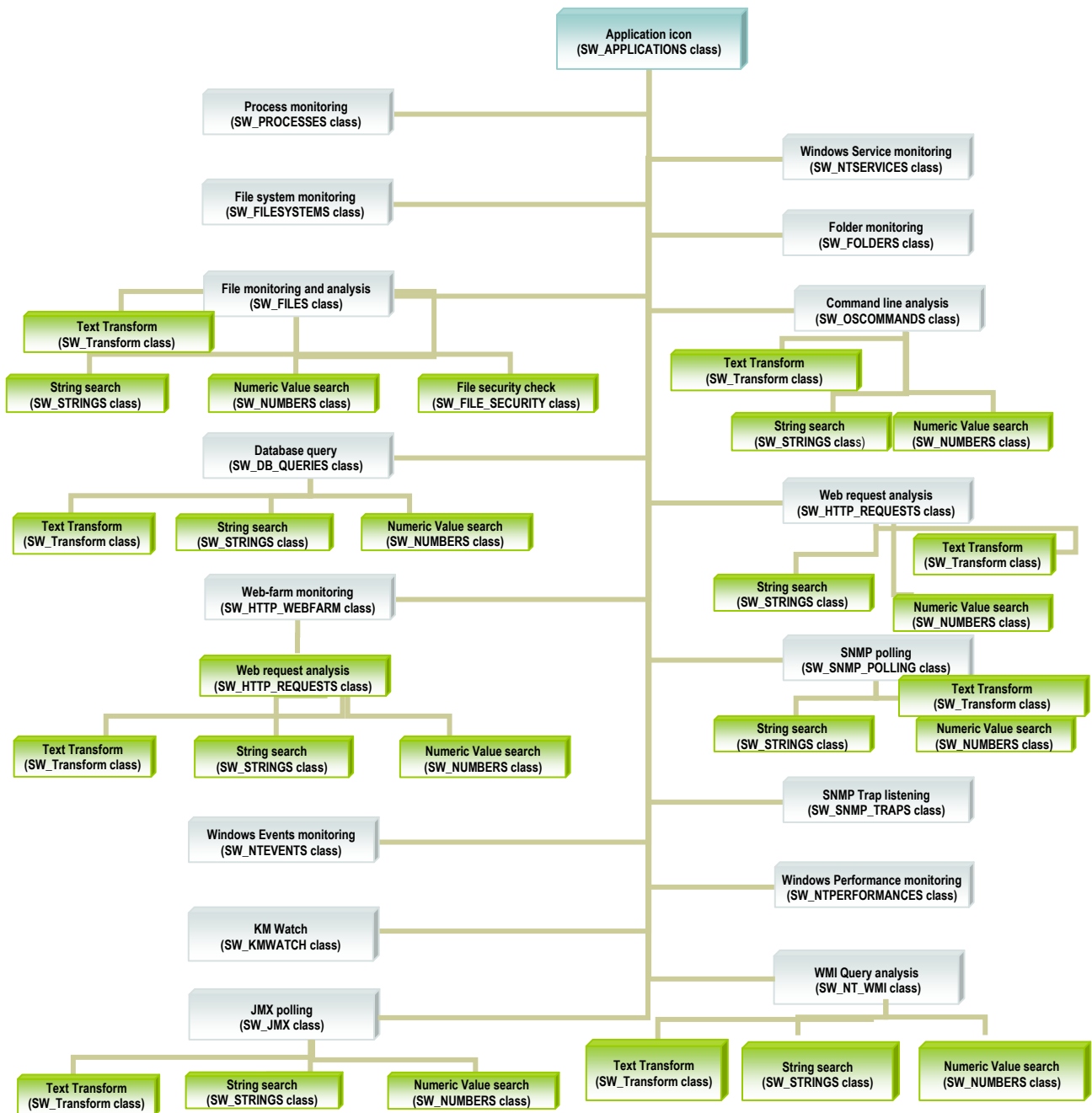
## 1. List of application classes

There are 22 application classes in Monitoring Studio KM for PATROL. If the KM is properly loaded, the following 22 classes should be loaded on the monitored system and console:

| Application Class | Description   |
|-------------------|---|
| SW_APPLICATIONS   | Monitors application/container icons  |
| SW_DB_QUERIES     | Executes and monitors database queries  |
| SW_FILES          | Monitors files and file content   |
| SW_FILE_SECURITY  | Monitors file security  |
| SW_FILESYSTEMS    | Monitors file-systems   |
| SW_FOLDERS        | Monitors folders  |
| SW_HTTP_REQUESTS  | Monitors web-based applications and executes HTTP requests                              |
| SW_HTTP_WEBFARM   | Monitors web farms  |
| SW_JMX            | Polls and monitors JMX-enabled application servers                                      |
| SW_KMWATCH        | Monitors parameters of other KMs  |
| SW_NTEVENTS       | Monitors Windows Event Logs   |
| SW_NTPERFORMANCE  | Monitors Windows Performance counters   |
| SW_NTSERVICES     | Monitors Windows Services   |
| SW_NT_WMI         | Executes and monitors WMI queries   |
| SW_NUMBERS        | Performs numeric value extractions  |
| SW_OSCOMMANDS     | Executes, monitors and parses command lines and scripts                                 |
| SW_PROCESSES      | Monitors processes  |
| SW_SENTRY         | Main application class  |
| SW_SNMP_POLLING   | Polls and monitors SNMP devices   |
| SW_SNMP_TRAPS     | Monitors and listens for SNMP traps   |
| SW_STRINGS        | Executes string searches  |
| SW_TRANSFORM      | Transforms complex (multi-line, HTML, XML) text to enable string/numeric value searches |

## 2. Hierarchy

The picture below represents the typical hierarchy of Monitoring Studio instances within the PATROL console.



## The Application Classes

---

This section lists the 22 application classes of Monitoring Studio KM for PATROL with details on the parameters discovered and the menu commands available for each application class.

## 1. SW\_APPLICATIONS

You can create instances of the SW\_APPLICATIONS class (application/container icons) by clicking on **the Monitoring Studio icon > New > Application icon** (container).

SW\_APPLICATIONS instances are used to group different monitoring tools configured to monitor a given application, device, or any other IT component. SW\_APPLICATIONS instances can contain other SW\_APPLICATIONS instances (containers and sub-containers).

### Parameters

None

### InfoBox

| Name                        | Description   |
|-----------------------------|---|
| <b>ID</b>                   | PATROL internal identifier of the application/container icon  |
| <b>Parent ID</b>            | PATROL internal identifier of the parent icon   |
| <b>Application ID</b>       | PATROL internal identifier of the root parent icon  |
| <b>First required file</b>  | File whose presence is required to activate the monitoring of this application/container                  |
| <b>Second required file</b> | File whose presence is required to activate the monitoring of this application/container                  |
| <b>Third required file</b>  | File whose presence is required to activate the monitoring of this application/container                  |
| <b>Fourth required file</b> | File whose presence is required to activate the monitoring of this application/container                  |
| <b>Constant 1</b>           | Name of the first application constant  |
| <b>Constant 2</b>           | Name of the second application constant   |
| <b>Constant 3</b>           | Name of the third application constant  |
| <b>Constant 4</b>           | Name of the fourth application constant   |
| <b>Constant 5</b>           | Name of the fifth application constant  |
| <b>Contact</b>              | Name or contact information of the person in charge of the application                                    |
| <b>Description</b>          | Description of the application  |
| <b>Start command line</b>   | The command line that is used to start the application by the Manage > Start the application menu command |
| <b>Stop command line</b>    | The command line that is used to stop the application by the Manage > Stop the application menu command   |

## Menu Commands

| Menu Command                                      | Description  |
|---|--|
| <b>New &gt; Process monitoring...</b>             | Starts the process monitoring wizard   |
| <b>New &gt; Windows Service monitoring...</b>     | Starts the Windows service monitoring wizard (only on Windows servers)   |
| <b>New &gt; File monitoring and analysis...</b>   | Starts the file monitoring wizard  |
| <b>New &gt; Folder monitoring...</b>              | Starts the folder monitoring wizard  |
| <b>New &gt; File System monitoring...</b>         | Starts the file system monitoring wizard   |
| <b>New &gt; Command Line analysis...</b>          | Starts the command line execution and analysis wizard  |
| <b>New &gt; Database Query analysis...</b>        | Starts the database query analysis wizard  |
| <b>New &gt; Java MBean polling...</b>             | Starts the JMX polling wizard  |
| <b>New &gt; WMI Query analysis...</b>             | Starts the WMI query analysis wizard   |
| <b>New &gt; Web Request analysis...</b>           | Starts the Web request analysis wizard   |
| <b>New &gt; Web Farm monitoring...</b>            | Starts the Web-farm monitoring wizard  |
| <b>New &gt; SNMP polling...</b>                   | Starts the SNMP polling wizard   |
| <b>New &gt; SNMP Trap listening...</b>            | Starts the SNMP trap listening wizard  |
| <b>New &gt; Windows Event monitoring...</b>       | Starts the Windows Event monitoring wizard (On Windows Agents only)  |
| <b>New &gt; Windows Performance monitoring...</b> | Starts the Windows Performance monitoring wizard. (On Windows Agents only)   |
| <b>New &gt; KM Watch...</b>                       | Starts the KM Watch wizard   |
| <b>New &gt; Sub-container...</b>                  | Starts the new sub-container icon wizard   |
| <b>Edit...</b>                                    | Opens the application/container wizard for this application/container  |
| <b>Modify Application Constants</b>               | Modifies the application constants   |
| <b>Set Polling Interval</b>                       | Sets the polling interval  |
| <b>Set Global Alert Actions</b>                   | Opens the Alert Actions wizard for the whole application/container, including all of its children monitoring instances. Only for root application/containers |
| <b>Display Object Configuration</b>               | Displays the Monitoring Studio configuration report of the selected container and all its dependent objects  |
| <b>Cut</b>  | Cuts this application/container instance   |
| <b>Copy</b>                                       | Copies this application/container instance   |
| <b>Paste</b>                                      | Pastes a previously copied or cut instance into this application/container   |
| <b>Delete</b>                                     | Delete this application/container instance as well as all of its children  |
| <b>Rename</b>                                     | Enables renaming the monitored instance  |
| <b>Manage &gt; Start the application</b>          | Executes the command line to start the monitored application (the command line is specified in the application/container icon wizard)                        |
| <b>Manage &gt; Stop the application</b>           | Executes the command line to stop the monitored application (the command line is specified in the application/container icon wizard)                         |
| <b>Export configuration</b>                       | Allows exporting the configuration of this application/container along with all of its dependent instances   |
| <b>Pause monitoring</b>                           | Suspends the monitoring of the application/container and that of its dependent instances   |
| <b>Resume monitoring</b>                          | Resumes the monitoring of this application/container and that of its dependent instances   |

## 2. SW\_DB\_QUERIES

### Parameters

| Name                    | Description  | Polling interval            |
|-------------------------|--|-----------------------------|
| <b>ConnectionStatus</b> | State of the server connection<br>Unit: 0 = OK, 1 = ALARM  | DbQueryColl every 2 minutes |
| <b>DbQueryColl</b>      | Database Request collector   | Default: 2 minutes          |
| <b>ExecutionTime</b>    | SQL query execution time<br>Unit: Second(s)  | DbQueryColl every 2 minutes |
| <b>QueryStatus</b>      | SQL query execution status<br>Unit:0= OK, 1= ALARM   | DbQueryColl every 2 minutes |
| <b>ReturnOutput</b>     | Output of the Database query execution that will be parsed for String and Numeric Value Extractions<br>Unit: N/A | DbQueryColl every 2 minutes |

### InfoBox

| Name                         | Description  |
|------------------------------|--|
| <b>ID</b>                    | PATROL internal identifier of the Database Query instance                    |
| <b>Parent ID</b>             | PATROL internal identifier of the parent application/container               |
| <b>Application ID</b>        | PATROL internal identifier of the Database Query instance's root application |
| <b>Database Type</b>         | Database type (Oracle Database Server, Microsoft SQL Server or MySQL Server) |
| <b>Instance/service name</b> | Displays the name of the instance  |
| <b>Database name</b>         | Displays the database name   |
| <b>Connect as</b>            | Login used to connect to the database server                                 |
| <b>SQL Query</b>             | Displays the SQL Query that will be run                                      |

### Menu Commands

| Menu Command                             | Description   |
|--|---|
| <b>New &gt; Numeric Value Extraction</b> | Creates a new numeric value extraction for this Database Query instance   |
| <b>New &gt; String Search</b>            | Creates a new string search for this Database Query instance  |
| <b>New &gt; Text Pre-processing</b>      | Starts the Text pre-processing wizard for this Database Query instance  |
| <b>Edit</b>                              | Edits the Database Query analysis settings  |
| <b>Set Thresholds</b>                    | Sets thresholds for the parameters of this Database Query instance  |
| <b>Set Polling interval</b>              | Sets the polling interval for the instance  |
| <b>Set Alert Actions</b>                 | Adds specific Alert Actions to the Database Query instance  |
| <b>Display Object Configuration</b>      | Displays the Monitoring Studio configuration report for the Database Query instance and all dependent instances |
| <b>Cut</b>                               | Cuts this Database Query instance   |

**SENTRY SOFTWARE**

| <b>Menu Command</b>       | <b>Description</b>   |
|---------------------------|--|
| <b>Copy</b>               | Copies this Database Query instance  |
| <b>Paste</b>              | Pastes a previously copied or cut string search or numeric value extraction instance         |
| <b>Delete</b>             | Deletes the Database Query instance and all its dependent instances                          |
| <b>Rename</b>             | Enables renaming this monitored instance   |
| <b>Pause monitoring</b>   | Pauses the monitoring of the Database Query instance and that of its dependent instances     |
| <b>Resume monitoring</b>  | Resumes the monitoring of the Database Query instance and that of its dependent instances    |
| <b>Refresh parameters</b> | Refreshes the parameters of the Database Query instance and those of its dependent instances |

## 3. SW\_FILES

### Parameters

| Name                    | Description   | Value set by |
|-------------------------|---|--------------|
| <b>Exists</b>           | Determines whether the file exists or not<br>Unit: 0 = Exists, 1 = Does not exist | fileColl     |
| <b>FileColl</b>         | Collects information about the file<br>Default polling interval: 2 minutes        |              |
| <b>GrowthPercentage</b> | File growth percentage<br>Unit: Percent per minute (%/min)                        | fileColl     |
| <b>GrowthSpeed</b>      | File growth speed<br>Unit: Kilobytes per minute (KB/min)                          | fileColl     |
| <b>LastChanged</b>      | Elapsed time since the File was modified<br>Unit: Minutes                         | fileColl     |
| <b>Size</b>             | File size<br>Unit: Kilobytes (KB)   | fileColl     |

### InfoBox

| Name                        | Description  |
|-----------------------------|--|
| <b>ID</b>                   | PATROL internal identifier of the File monitoring                        |
| <b>Parent ID</b>            | PATROL internal identifier of the File instance's parent                 |
| <b>Application ID</b>       | PATROL internal identifier of the File instance's root application       |
| <b>File name &amp; path</b> | File name and path (with wildcards)                                      |
| <b>Monitored parameters</b> | List of parameters that are currently being used for the File monitoring |
| <b>Scan mode</b>            | File scan mode (either "From start" or "From last position")             |
| <b>Monitored file</b>       | File name path of the file currently being monitored                     |

### Menu Commands

| Menu Command                             | Description  |
|--|--|
| <b>New &gt; File security check</b>      | Creates a new File security monitoring for the current File  |
| <b>New &gt; Numeric Value Extraction</b> | Creates a new numeric value extraction for the current File  |
| <b>New &gt; String Search</b>            | Creates a new string search for the current File   |
| <b>New &gt; Text Pre-processing</b>      | Creates a new Text preprocessing instance for the current File   |
| <b>Edit</b>                              | Edits the File monitoring settings   |
| <b>Set Thresholds</b>                    | Sets thresholds for the parameters of this instance  |
| <b>Set Polling Interval</b>              | Sets the polling interval for the instance   |
| <b>Set Alert Actions</b>                 | Adds specific Alert Actions to the File monitoring   |
| <b>Display Object Configuration</b>      | Displays the Monitoring Studio configuration report for the File monitoring instance and all dependent instances |

### SENTRY SOFTWARE

| Menu Command                           | Description  |
|--|--|
| <b>Cut</b>                             | Cuts this File monitoring instance   |
| <b>Copy</b>                            | Copies this File monitoring instance   |
| <b>Paste</b>                           | Pastes a previously copied or cut string search or numeric value extraction instance   |
| <b>Delete</b>                          | Deletes the File monitoring and all its dependent instances  |
| <b>Rename</b>                          | Enables renaming this monitored instance   |
| <b>View file content</b>               | Displays the File content  |
| <b>Restart Scan from start of file</b> | If a string search or a numeric value extraction is performed for this File, restart the File scan from the start of the File (only relevant to "LOG" Files) |
| <b>Pause monitoring</b>                | Pauses the monitoring of the File instance as well as that of its dependent instances  |
| <b>Resume monitoring</b>               | Resumes the monitoring of the File instance as well as that of all its dependent instances   |
| <b>Refresh parameters</b>              | Refreshes the parameters of the File monitoring instance as well as those of its dependent instances   |

## 4. SW\_FILE\_SECURITY

### Parameters

| Name                     | Description   | Value set by     |
|--------------------------|---|------------------|
| <b>AccessRightsCheck</b> | File's access right status<br>Unit: 0 = OK, 1 = File's access rights have changed                           | fileSecurityColl |
| <b>GroupCheck</b>        | File's group status.<br>Unit: 0 = OK, 1 = File's group has changed  | fileSecurityColl |
| <b>Integrity</b>         | File's integrity status (i.e. no changes made to the content)<br>Unit: 0 = OK, 1 = File content has changed | fileSecurityColl |
| <b>OwnerCheck</b>        | File's owner status<br>Unit: 0 = OK, 1 = File's owner has changed   | fileSecurityColl |
| <b>fileSecurityColl</b>  | Collects the security information about the monitored file<br>Default polling: 2 minutes                    |                  |

### InfoBox

| Name                  | Description   |
|-----------------------|---|
| <b>ID</b>             | PATROL internal identifier of the File security check                       |
| <b>Parent ID</b>      | PATROL internal identifier of the File security instance's parent           |
| <b>Application ID</b> | PATROL internal identifier of the File security instance's root application |

### Menu Commands

| Menu Command                  | Description  |
|-------------------------------|--|
| <b>Edit</b>                   | Edits the File security monitoring settings  |
| <b>Set Polling Interval</b>   | Sets the polling interval for the instance   |
| <b>Set Alert Action</b>       | Adds specific Alert Actions to the File security monitoring  |
| <b>Cut</b>                    | Cuts this File security monitoring instance  |
| <b>Copy</b>                   | Copies this File security monitoring instance  |
| <b>Delete</b>                 | Deletes the File security monitoring and all its dependent instances   |
| <b>Rename</b>                 | Enables renaming this monitored instance   |
| <b>Acknowledge and Update</b> | Acknowledges all the alerts on this File security instance and updates its settings to reflect any security changes made |
| <b>Pause monitoring</b>       | Pauses the monitoring of the File security instance  |
| <b>Resume monitoring</b>      | Resumes the monitoring of the File security instance   |
| <b>Refresh parameters</b>     | Refreshes the parameters of the File security instance   |

## 5. SW\_FILESYSTEMS

### Parameters

| Name                             | Description  | Value set by                             |
|----------------------------------|--|--|
| <b>FreeMegabytes</b>             | File System free space<br>Unit: Megabytes (MB)                               | SW_SENTRY/FileSystemColl every 2 minutes |
| <b>FreeSpacePercent</b>          | File System free space<br>Unit: Percent (%)                                  | SW_SENTRY/FileSystemColl every 2 minutes |
| <b>UsedSpaceGrowthSpeed</b>      | File System used space growth speed<br>Unit: Megabytes per hour (MB/h)       | SW_SENTRY/FileSystemColl every 2 minutes |
| <b>UsedSpaceGrowthPercentage</b> | File System used space growth percentage.<br>Unit: Percentage per hour (%/h) | SW_SENTRY/FileSystemColl every 2 minutes |

### InfoBox

| Name                        | Description   |
|-----------------------------|---|
| <b>ID</b>                   | PATROL internal identifier of the File System monitoring                    |
| <b>Parent ID</b>            | PATROL internal identifier of the File System instance's parent             |
| <b>Application ID</b>       | PATROL internal identifier of the File Systems instance's' root application |
| <b>File System instance</b> | File System instance monitored  |

### Menu Commands

| Menu Command                        | Description   |
|-------------------------------------|---|
| <b>Edit</b>                         | Edits the File System monitoring settings   |
| <b>Set Thresholds</b>               | Sets thresholds for the parameters of this instance   |
| <b>Set Polling Interval</b>         | Sets the polling interval for the instance  |
| <b>Set Alert Action</b>             | Adds specific Alert Actions to the File Systems instance  |
| <b>Display Object Configuration</b> | Displays the Monitoring Studio configuration report for the File Systems instance and all dependent instances |
| <b>Cut</b>                          | Cuts this File System monitoring instance   |
| <b>Copy</b>                         | Copies this File System monitoring instance   |
| <b>Delete</b>                       | Deletes the File Systems monitoring and all its dependent instances   |
| <b>Rename</b>                       | Allows you to rename this File System monitoring instance   |
| <b>Pause monitoring</b>             | Pauses the File System monitoring   |
| <b>Resume monitoring</b>            | Resumes the File System monitoring  |
| <b>Refresh parameters</b>           | Refreshes all instance parameters of the SW_FILESYSTEMS application class                                     |

## 6. SW\_FOLDERS

### Parameters

| Name                                 | Description  | Value set by |
|--------------------------------------|--|--------------|
| <b>DeletedFileCount</b>              | Number of deleted files per minute<br>Unit: File(s) per minute (File(s)/min)                                 | FolderColl   |
| <b>FileCount</b>                     | Number of files in the folder and subfolders if specified<br>Unit: File(s)                                   | FolderColl   |
| <b>FolderColl</b>                    | Folder collector<br>Default polling interval: 2 minutes  |              |
| <b>FolderSize</b>                    | Folder size (include subfolders if specified) in MB<br>Unit: Megabyte(s) (MB)                                | FolderColl   |
| <b>GrowthPercentage</b>              | Percentage of the folder size growth per minute<br>Unit: Percent per minute (%/min)                          | FolderColl   |
| <b>GrowthSpeed</b>                   | Folder size growth per minute<br>Unit: Kilobyte(s) per minute (KB/min)                                       | FolderColl   |
| <b>LastModifiedFileElapsedTime</b>   | Elapsed time since the last modification of any file in this folder<br>Unit: Minute(s) (min)                 | FolderColl   |
| <b>ModifiedFileCount</b>             | Number of modified files per minute<br>Unit: File(s) per minute (File(s)/min)                                | FolderColl   |
| <b>NewFileCount</b>                  | Number of new files per minute<br>Unit: Displays the number of new files per minute                          | FolderColl   |
| <b>OldestModifiedFileElapsedTime</b> | Elapsed time since the oldest modification of any file in this folder or sub-folder<br>Unit: Minute(s) (min) | FolderColl   |

### InfoBox

| Name                     | Description  |
|--------------------------|--|
| <b>ID</b>                | PATROL internal identifier of the Folder monitoring                  |
| <b>Parent ID</b>         | PATROL internal identifier of the Folder instance's parent           |
| <b>Application ID</b>    | PATROL internal identifier of the Folder instance's root application |
| <b>Folder</b>            | Path of the monitored folder   |
| <b>Include subfolder</b> | Displays whether or not the subfolders are monitored                 |

## Menu Commands

| Menu Command                        | Description  |
|-------------------------------------|--|
| <b>Edit</b>                         | Edits the Folder monitoring settings   |
| <b>Set Thresholds</b>               | Sets thresholds for the parameters of this instance  |
| <b>Set Polling Interval</b>         | Sets the polling interval for the instance   |
| <b>Set Alert Actions</b>            | Adds specific Alert Actions to the Folder monitoring   |
| <b>Display Object Configuration</b> | Displays the Monitoring Studio configuration report for the Folder monitoring instance and all dependent instances |
| <b>Cut</b>                          | Cuts this folder monitoring instance   |
| <b>Copy</b>                         | Copies this folder monitoring instance   |
| <b>Delete</b>                       | Pauses the Folder monitoring   |
| <b>Rename</b>                       | Renames the Folder monitoring  |
| <b>Pause monitoring</b>             | Pauses the monitoring of the Folder instance   |
| <b>Resume monitoring</b>            | Resumes the monitoring of the Folder instance  |
| <b>Refresh monitoring</b>           | Refreshes the parameters of the Folder instance  |

## 7. SW\_HTTP\_REQUESTS

### Parameters

| Name                         | Description   | Value set by    |
|------------------------------|---|-----------------|
| <b>ExecutionTime</b>         | Time taken by the Web request to execute<br>Unit: Second (s)                              | httpRequestColl |
| <b>httpRequestColl</b>       | Web Request collector<br>Default polling interval: 2 minutes                              |                 |
| <b>HTTPStatusCode</b>        | HTTP Response Status code<br>Unit: 200 = OK, 404 = Error,...                              | httpRequestColl |
| <b>ReturnOutput</b>          | HTTP Response (including or not headers and HTML tags, depending on the selected options) | httpRequestColl |
| <b>ServerConnectionState</b> | Server connection status<br>Unit: 0 = OK, 1 = ALARM                                       | httpRequestColl |
| <b>Status</b>                | Web Request status<br>Unit: 0 = OK, 1 = Warning, 2 = ALARM                                | httpRequestColl |

### InfoBox

| Name                    | Description   |
|-------------------------|---|
| <b>ID</b>               | PATROL internal identifier of the Web Request instance                    |
| <b>Parent ID</b>        | PATROL internal identifier of the Web Request instance's parent           |
| <b>Application ID</b>   | PATROL internal identifier of the Web Request instance's root application |
| <b>Used HTTP method</b> | HTTP method that is used for this Web Request analysis                    |

### Menu Commands

| Menu Command                             | Description  |
|--|--|
| <b>New &gt; Numeric Value Extraction</b> | Creates a new numeric value extraction for this Web Request  |
| <b>New &gt; String Search</b>            | Creates a new string search for this Web Request   |
| <b>New &gt; Text Pre-Processing</b>      | Creates a new Text pre-processing for this Web Request   |
| <b>Edit</b>                              | Edits the Web Request monitoring settings  |
| <b>Set Thresholds</b>                    | Sets thresholds for the parameters of this instance  |
| <b>Set Polling Interval</b>              | Sets the polling interval for the instance   |
| <b>Set Alert Actions</b>                 | Adds specific Alert Actions to the Web Request analysis  |
| <b>Display Object Configuration</b>      | Displays the Monitoring Studio configuration report for the Web Request instance and all its dependent instances |
| <b>Cut</b>                               | Cuts this Web Request instance   |
| <b>Copy</b>                              | Copies this Web Request instance   |
| <b>Paste</b>                             | Pastes a previously copied or cut string search or numeric value extraction instance                             |
| <b>Delete</b>                            | Deletes the Web Request analysis and all its dependent instances   |

**SENTRY SOFTWARE**

| <b>Menu Command</b>       | <b>Description</b>  |
|---------------------------|---|
| <b>Rename</b>             | Renames the Web Request monitoring instance   |
| <b>Pause monitoring</b>   | Pauses the monitoring of the Web Request instance as well as that of its dependent instances  |
| <b>Resume monitoring</b>  | Resumes the monitoring of the Web Request instance as well as that of its dependent instances |
| <b>Refresh parameters</b> | Refreshes the parameters of the Web Request instance as well those of its dependent instances |

## 8. SW\_HTTP\_WEBFARM

### Parameters

| Name                            | Description   | Value set by    |
|---------------------------------|---|-----------------|
| <b>OperationalServerPercent</b> | Number of servers that are operational<br>Unit: Server (s)    | httpWebFarmColl |
| <b>OperationalServerCount</b>   | Percentage of operational servers<br>Unit: Percent            | httpWebFarmColl |
| <b>httpWebFarmColl</b>          | HTTP Web-farm collector<br>Default polling interval: 1 minute |                 |

### InfoBox

| Name                  | Description   |
|-----------------------|---|
| <b>ID</b>             | PATROL internal identifier of the Web-farm monitoring                             |
| <b>Parent ID</b>      | PATROL internal identifier of the Web-farm monitoring instance's parent           |
| <b>Application ID</b> | PATROL internal identifier of the Web-farm monitoring instance's root application |

### Menu Commands

| Menu Command                             | Description   |
|--|---|
| <b>New &gt; String Search</b>            | Creates a new string search for this Web-farm monitoring  |
| <b>New &gt; Numeric Value Extraction</b> | Creates a new numeric value extraction for this Web-farm monitoring   |
| <b>New &gt; Text Pre-processing</b>      | Creates a new Text pre-processing for this Web-farm monitoring  |
| <b>Edit</b>                              | Edits the Web-farm monitoring settings  |
| <b>Add hosts</b>                         | Adds new hosts to the Web-farm monitoring. A new Web Request monitoring will be created for each host added   |
| <b>Set Thresholds</b>                    | Sets thresholds for the parameters of this instance   |
| <b>Set Polling Interval</b>              | Sets the polling interval for the instance  |
| <b>Set Alert Actions</b>                 | Adds specific Alert Actions to the Web-farm instance  |
| <b>Display Object Configuration</b>      | Displays the Monitoring Studio configuration report for the Web-farm instance and all its dependent instances |
| <b>Cut</b>                               | Cuts this Web-farm monitoring instance  |
| <b>Copy</b>                              | Copies this Web-farm monitoring instance  |
| <b>Paste</b>                             | Pastes a previously copied or cut string search or numeric value extraction instance                          |
| <b>Delete</b>                            | Deletes the Web-farm monitoring and all its dependent instances   |
| <b>Rename</b>                            | Renames the Web-farm monitoring instance  |
| <b>Pause monitoring</b>                  | Pauses the monitoring of the Web-farm instance as well as that of its dependent instances                     |
| <b>Resume monitoring</b>                 | Resumes the monitoring of the Web-farm instance as well as that of its dependent instances                    |
| <b>Refresh parameters</b>                | Refreshes the parameters of the Web-farm instance   |

## 9. SW\_JMX

### Parameters

| Name                   | Description   | Value set by |
|------------------------|---|--------------|
| <b>JMXColl</b>         | JMX collector. Executes the JMX polling query<br>Default polling interval: 2 minutes                          |              |
| <b>ExecutionStatus</b> | Displays the output of the JMX poll execution<br>Unit: 0 =OK; 1= ALARM<br>Default polling interval: 2 minutes | JMXColl      |
| <b>Value</b>           | Displays the value of an attribute in integers<br>Default polling interval: 2 minutes                         | JMXColl      |
| <b>Text</b>            | Displays the value of an attribute in text<br>Default polling interval: 2 minutes                             | JMXColl      |

### InfoBox

| Name                  | Description   |
|-----------------------|---|
| <b>ID</b>             | PATROL internal identifier of the JMX polling instance                                  |
| <b>Parent ID</b>      | PATROL internal identifier of the JMX polling instance's parent                         |
| <b>Application ID</b> | PATROL internal identifier of the JMX polling instance's root application               |
| <b>Server type</b>    | Type of JMX server (JBoss/WebLogic/generic etc.)  |
| <b>Host</b>           | Displays name of host machine   |
| <b>Port</b>           | Displays port number of JMX server  |
| <b>JMX Query</b>      | Displays the query to be executed   |
| <b>User Name</b>      | Displays the user name  |
| <b>Path to java</b>   | Displays the path of the java virtual machine on the local server (e.g.%JAVA_HOME%\bin) |
| <b>Timeout</b>        | Displays the execution timeout  |
| <b>Domain</b>         | Displays the domain monitored   |
| <b>Key property</b>   | Displays the key property monitored   |
| <b>Attribute</b>      | Displays the attribute monitored  |

## Menu Commands

| Menu Command                             | Description  |
|--|--|
| <b>New &gt; String Search</b>            | Creates a new string search for this JMX polling instance  |
| <b>New &gt; Numeric Value Extraction</b> | Creates a new numeric value extraction for this JMX polling instance   |
| <b>New &gt; Text Pre-Processing</b>      | Creates a new Text pre-processing for this JMX polling instance  |
| <b>Edit</b>                              | Edits the JMX polling instance's monitoring settings   |
| <b>Set Thresholds</b>                    | Allows you to set or edit the thresholds   |
| <b>Set Polling interval</b>              | Sets the polling interval for this JMX polling instance monitoring   |
| <b>Set Alert actions</b>                 | Adds specific Alert Actions to the JMX polling monitoring  |
| <b>Display Object Configuration</b>      | Displays the Monitoring Studio configuration report for the JMC polling instance and all its dependent instances |
| <b>Cut</b>                               | Cuts this instance   |
| <b>Copy</b>                              | Copies this instance   |
| <b>Paste</b>                             | Pastes a previously copied or cut string search or numeric value extraction instance                             |
| <b>Delete</b>                            | Deletes the JMX polling and all its dependent instances  |
| <b>Rename</b>                            | Allows you to rename this JMX polling instance monitoring  |
| <b>Pause monitoring</b>                  | Pauses the monitoring of this JMX polling instance and that of its dependent instances                           |
| <b>Resume monitoring</b>                 | Resumes the monitoring of this JMX polling instance and that of its dependent instances                          |
| <b>Refresh parameters</b>                | Refreshes the parameters of the JMX polling instance and those of its dependent instances                        |

## 10. SW\_KMWATCH

### Parameters

| Name               | Description  | Value set by |
|--------------------|--|--------------|
| <b>KMWatchColl</b> | Collects values by getting the information from the monitored parameter and setting the KM Watch value parameter with this value<br><br>Default polling interval: 1 minute |              |
| <b>Value</b>       | Value of the parameter that is being monitored<br><br>Unit: Depends on the parameter.  | KMWatchColl  |

### InfoBox

| Name                  | Description  |
|-----------------------|--|
| <b>ID</b>             | PATROL internal identifier of the KM Watch monitoring                  |
| <b>Parent ID</b>      | PATROL internal identifier of the KM Watch instance's parent           |
| <b>Application ID</b> | PATROL internal identifier of the KM Watch instance's root application |
| <b>Class</b>          | Class of the parameter that is being monitored                         |
| <b>Instance</b>       | Instance of the parameter that is being monitored                      |
| <b>Parameter</b>      | Name of the parameter that is being monitored                          |
| <b>Scale</b>          | Scale used for the parameter's value                                   |

### Menu Commands

| Menu Command                        | Description   |
|-------------------------------------|---|
| <b>Edit</b>                         | Edits the KM Watch monitoring settings  |
| <b>Set Thresholds</b>               | Sets thresholds for the parameters of this instance   |
| <b>Set Polling Interval</b>         | Sets the polling interval for the instance  |
| <b>Set Alert Actions</b>            | Adds specific Alert Actions to the KM Watch monitoring  |
| <b>Display Object Configuration</b> | Displays the Monitoring Studio configuration report for the KM Watch instance and all its dependent instances |
| <b>Cut</b>                          | Cuts this KM Watch instance   |
| <b>Copy</b>                         | Copies this KM Watch instance   |
| <b>Delete</b>                       | Deletes the KM Watch monitoring   |
| <b>Rename</b>                       | Renames the KM Watch monitoring instance  |
| <b>Pause monitoring</b>             | Pauses the monitoring of the KM Watch instance  |
| <b>Resume monitoring</b>            | Resumes the monitoring of the KM Watch instance   |
| <b>Refresh parameters</b>           | Refreshes the parameters of the KM Watch instance   |

## 11. SW\_NTEVENTS

### Parameters

| Name                      | Description   | Value Set By                          |
|---------------------------|---|---------------------------------------|
| <b>MatchingEventCount</b> | Number of matching Windows events<br>Unit: Event      | SW_SENTRY/NTEventColl every 2 minutes |
| <b>MatchingEventRate</b>  | Rate of matching Windows events<br>Unit: Event/minute | SW_SENTRY/NTEventColl every 2 minutes |

### InfoBox

| Name                          | Description   |
|-------------------------------|---|
| <b>ID</b>                     | PATROL internal identifier of the Windows Event monitoring                  |
| <b>Parent ID</b>              | PATROL internal identifier of the Windows Event instance's parent           |
| <b>Application ID</b>         | PATROL internal identifier of the Windows Event instance's root application |
| <b>Event Log</b>              | Indicates which EventLog is searched  |
| <b>Event source</b>           | Source of the event to be searched for                                      |
| <b>Event ID</b>               | ID of the event to be searched for  |
| <b>Acknowledging NT Event</b> | Is the auto-acknowledgment activated?                                       |
| <b>Acknowledge</b>            | What is to be acknowledged: One event or all events?                        |
| <b>Timeout</b>                | Time after which a matching Windows event is acknowledged                   |
| <b>Run Alert Actions</b>      | Whether Alert Actions are executed for each match                           |

### Menu Commands

| Menu Command                        | Description  |
|-------------------------------------|--|
| <b>Edit</b>                         | Edits the Windows Event monitoring settings  |
| <b>Set Thresholds</b>               | Sets thresholds for the parameters of this instance  |
| <b>Set Polling Interval</b>         | Sets the polling interval for the instance   |
| <b>Set Alert Actions</b>            | Adds specific Alert Actions to the Windows Event instance  |
| <b>Display Object Configuration</b> | Displays the Monitoring Studio configuration report for the Windows Event instance and all its dependent instances |
| <b>Cut</b>                          | Cuts this Windows Event instance   |
| <b>Copy</b>                         | Copies this Windows Event instance   |
| <b>Delete</b>                       | Deletes the Windows Event instance   |
| <b>Rename</b>                       | Renames the Windows Event  |
| <b>Acknowledge all and reset</b>    | Acknowledges all alerts and resets the <i>MatchingEventCount</i> parameter to '0'                                  |
| <b>Pause monitoring</b>             | Pauses the monitoring of the Windows Event instance  |
| <b>Resume monitoring</b>            | Resumes the monitoring of the Windows Event instance   |
| <b>Refresh parameters</b>           | Refreshes all instance parameters of the SW_NTEVENTS class   |

## 12. SW\_NTPERFORMANCE

### Parameters

| Name                     | Description  | Value set by      |
|--------------------------|--|-------------------|
| <b>NTPerformanceColl</b> | Collects Windows Performance counter values<br>Default Polling Interval: 2 minutes   |                   |
| <b>Value</b>             | Value of the monitored Windows Performance counter<br>Unit: Depends on the parameter | NTPerformanceColl |

### InfoBox

| Name                        | Description   |
|-----------------------------|---|
| <b>ID</b>                   | PATROL internal identifier of the Windows Performance monitoring                              |
| <b>Parent ID</b>            | PATROL internal identifier of the Windows Performance instance's parent                       |
| <b>Application ID</b>       | PATROL internal identifier of the Windows Performance instance's root application             |
| <b>Performance instance</b> | Name of the Windows Performance instance that is read   |
| <b>Counter</b>              | Name of the Windows Performance counter that is read  |
| <b>Instances</b>            | Selected Windows Performance instances  |
| <b>Value Type</b>           | How the value is calculated (average, maximum, etc.) when more than one instance was selected |
| <b>Scale</b>                | Scale used (the original performance value is divided by this number)                         |

### Menu Commands

| Menu Command                        | Description  |
|-------------------------------------|--|
| <b>Edit</b>                         | Edits the Windows Performance monitoring settings  |
| <b>Set Thresholds</b>               | Sets thresholds for the parameters of this instance  |
| <b>Set Polling Interval</b>         | Sets the polling interval for the instance   |
| <b>Set Alert Actions</b>            | Adds specific Alert Actions to the Windows Performance instance  |
| <b>Display Object Configuration</b> | Displays the Monitoring Studio configuration report for the Windows Performance instance and all its dependent instances |
| <b>Cut</b>                          | Cuts this Windows Performance instance   |
| <b>Copy</b>                         | Copies this Windows Performance instance   |
| <b>Delete</b>                       | Deletes the Windows Performance instance   |
| <b>Rename</b>                       | Renames the Windows Performance instance   |
| <b>Pause monitoring</b>             | Pauses the monitoring of the Windows Performance instance  |
| <b>Resume monitoring</b>            | Resumes the monitoring of the Windows Performance instance   |
| <b>Refresh parameters</b>           | Refreshes the parameters of the Windows Performance instance   |

## 13. SW\_NT SERVICES

### Parameters

| Name          | Description   | Value set by                             |
|---------------|---|--|
| <b>Status</b> | Status of the Windows Service<br>Unit: 0 = Started, 1 = Intermediate state, 2 = Stopped | SW_SENTRY/NTServiceColl every 2 minutes. |

### InfoBox

| Name                  | Description  |
|-----------------------|--|
| <b>ID</b>             | PATROL internal identifier of the Windows Service monitoring                   |
| <b>Application ID</b> | PATROL internal identifier of the Windows Service instance's parent            |
| <b>Parent ID</b>      | PATROL internal identifier of the Windows Service' instance's root application |
| <b>Service name</b>   | Name of the service that is monitored  |

### Menu Commands

| Menu Command                        | Description  |
|-------------------------------------|--|
| <b>Edit</b>                         | Edits the Windows Service monitoring settings  |
| <b>Set Thresholds</b>               | Sets thresholds for the parameters of this instance  |
| <b>Set Polling Interval</b>         | Sets the polling interval for the instance   |
| <b>Set Alert Actions</b>            | Adds specific Alert Actions to the Windows Service monitoring  |
| <b>Display Object Configuration</b> | Displays the Monitoring Studio configuration report for the Windows Service instance and all its dependent instances |
| <b>Cut</b>                          | Cuts this Windows Service monitoring instance  |
| <b>Copy</b>                         | Copies this Windows Service monitoring instance  |
| <b>Delete</b>                       | Deletes this Windows Service monitoring instance   |
| <b>Rename</b>                       | Renames the Windows Service monitoring   |
| <b>Pause monitoring</b>             | Pauses the monitoring of the Windows Service instance  |
| <b>Resume monitoring</b>            | Resumes the monitoring of the Windows Service instance   |
| <b>Refresh parameters</b>           | Refreshes all instance parameters of the SW_NT SERVICES class  |

## 14. SW\_NT\_WMI

### Parameters

| Name                | Description   | Value set by |
|---------------------|---|--------------|
| <b>WMIQueryColl</b> | WMI Request collector. Executes the WMI Query<br>Default polling interval: 2 minutes  |              |
| <b>ReturnOutput</b> | Displays the output of the WMI Query execution<br>Unit: N/A . Default polling interval: 2 minutes                           | WMIQueryColl |
| <b>QueryStatus</b>  | Displays whether or not the query was successfully executed<br>Unit: 0= OK, 1= ALARM<br>Default polling interval: 2 minutes | WMIQueryColl |

### InfoBox

| Name                  | Description   |
|-----------------------|---|
| <b>ID</b>             | PATROL internal identifier of the WMI Query instance                    |
| <b>Parent ID</b>      | PATROL internal identifier of the WMI Query instance's parent           |
| <b>Application ID</b> | PATROL internal identifier of the WMI Query instance's root application |
| <b>Parent type</b>    | Type of the parent (File, OS Command, etc.)                             |
| <b>Host</b>           | Displays name of host machine   |
| <b>Name Space</b>     | Displays WMI namespace (e.g.: root\cimv2)                               |
| <b>WMI Query</b>      | Displays the query to be executed                                       |
| <b>User Name</b>      | Displays the user name  |

## Menu Commands

| Menu Command                             | Description  |
|--|--|
| <b>New &gt; String Search</b>            | Creates a new string search for this WMI Query   |
| <b>New &gt; Numeric Value Extraction</b> | Creates a new numeric value extraction for this WMI Query  |
| <b>New &gt; Text Pre-processing</b>      | Creates a new Text pre-processing for this WMI Query   |
| <b>Edit</b>                              | Edits the Text-preprocessing monitoring settings   |
| <b>Set Thresholds</b>                    | Allows you to set or edit the thresholds   |
| <b>Set Polling</b>                       | Sets the polling interval for this WMI Query instance  |
| <b>Set Alert actions</b>                 | Adds specific Alert Actions to the WMI Query instance  |
| <b>Display Object Configuration</b>      | Displays the Monitoring Studio configuration report for the WMI Query instance and all its dependent instances |
| <b>Cut</b>                               | Cuts this instance   |
| <b>Copy</b>                              | Copies this instance   |
| <b>Paste</b>                             | Pastes a previously copied or cut string search or numeric value extraction instance                           |
| <b>Delete</b>                            | Deletes the WMI query monitoring and all its dependent instances   |
| <b>Rename</b>                            | Allows you to rename this WMI Query monitoring   |
| <b>Pause monitoring</b>                  | Pauses the monitoring of this WMI Query instance and that of its dependent instances                           |
| <b>Resume monitoring</b>                 | Resumes the monitoring of this WMI Query instance and that of its dependent instances                          |
| <b>Refresh parameters</b>                | Refreshes the parameters of the WMI Query instance and those of its dependent instances                        |

## 15. SW\_NUMBERS

### Parameters

| Name         | Description  | Value set by   |
|--------------|--|--|
| <b>Value</b> | Value of the Numeric value extracted (no value will be given if no number is found). | The collector of the parent's instance.<br><br>Example: The collect for an instance of SW_NUMBERS attached to a file is performed by the fileColl collector. |

### InfoBox

| Name                      | Description  |
|---------------------------|--|
| <b>ID</b>                 | PATROL internal identifier of the Numeric Value Extraction                                       |
| <b>Parent ID</b>          | PATROL internal identifier of the Numeric Value Extraction' instance's parent                    |
| <b>Application ID</b>     | PATROL internal identifier of the Numeric Value Extraction instance's root application           |
| <b>Parent Type</b>        | Type of the parent (File, OS Command, etc.)  |
| <b>Line Mode</b>          | Method used to select lines to search for the numeric value                                      |
| <b>Column Mode</b>        | Method chosen to search for the numeric value in the line  |
| <b>Parameter Type</b>     | Value taken into account if several values are found (last one, average, total, minimum/maximum) |
| <b>Line Numbers</b>       | Line number for the search for Numeric Value Extraction  |
| <b>Regular Expression</b> | Regular expression used to select the lines where the Numeric Value will be searched             |
| <b>Skip blank Lines</b>   | Indicates whether or not blank lines are skipped when searching for the Numeric Value            |
| <b>After/Before</b>       | Searches for the Numeric Value either after or before the specified string                       |
| <b>Specified String</b>   | Searches for the Numeric Value before or after this specified string                             |
| <b>Character Offset</b>   | Character offset where the Numeric Value is searched for   |
| <b>Field Number</b>       | Number of the field in which the Numeric Value will be searched for                              |
| <b>Field Separators</b>   | Characters that separates the fields in a text line  |
| <b>Unique Separator</b>   | Considers consecutives separators as a unique separator  |

## Menu Commands

| Menu Command                        | Description   |
|-------------------------------------|---|
| <b>Edit</b>                         | Edits the Numeric Value Extraction settings   |
| <b>Set Thresholds</b>               | Sets thresholds for the parameters of this instance   |
| <b>Set Polling Interval</b>         | Sets the polling interval for the instance  |
| <b>Set Alert Actions</b>            | Adds specific Alert Actions to the Numeric Value Extraction   |
| <b>Display Object Configuration</b> | Displays the Monitoring Studio configuration report for the Numeric Value Extraction instance and all its dependent instances |
| <b>Cut</b>                          | Cuts this Numeric Value Extraction instance   |
| <b>Copy</b>                         | Copies this Numeric Value Extraction instance   |
| <b>Delete</b>                       | Deletes the Numeric Value Extraction instance   |
| <b>Rename</b>                       | Renames the Numeric Value Extraction instance   |
| <b>Pause monitoring</b>             | Pauses the monitoring of the Numeric Value Extraction instance  |
| <b>Resume monitoring</b>            | Resumes the monitoring of the Numeric Value Extraction instance   |

## 16. SW\_OSCOMMANDS

### Parameters

| Name                   | Description   | Value set By  |
|------------------------|---|---------------|
| <b>ExecutionStatus</b> | Status of the command line execution<br>Unit: 0 = executed successfully, 1 = Error while executing the OS command | OSCommandColl |
| <b>ExecutionTime</b>   | Time taken by the command line to run<br>Unit: Seconds  | OSCommandColl |
| <b>OSCommandColl</b>   | Executes the Command Line and analyze its output  |               |
| <b>ReturnOutput</b>    | Displays the returned output of the Command Line<br>Unit: N/A   | OSCommandColl |

### InfoBox

| Name                  | Description  |
|-----------------------|--|
| <b>ID</b>             | PATROL internal identifier of the Command Line execution                   |
| <b>Parent ID</b>      | PATROL internal identifier of the Command Line instance's parent           |
| <b>Application ID</b> | PATROL internal identifier of the Command Line instance's root application |
| <b>OS command</b>     | Command line that is given to the OS to execute                            |
| <b>Timeout</b>        | Maximum execution time before timeout                                      |
| <b>Username</b>       | The command line is executed with this username                            |

### Menu Commands

| Menu Command                             | Description   |
|--|---|
| <b>New &gt; Numeric Value Extraction</b> | Creates a new numeric value extraction for this Command Line  |
| <b>New &gt; String Search</b>            | Creates a new string search for this Command Line   |
| <b>New &gt; Text Pre-processing</b>      | Creates a new Text pre-processing for this Command Line   |
| <b>Edit</b>                              | Edits the Command Line analysis settings  |
| <b>Set Thresholds</b>                    | Sets thresholds for the parameters of this instance   |
| <b>Set Polling Interval</b>              | Sets the polling interval for the instance  |
| <b>Set Alert Actions</b>                 | Adds specific Alert Actions to the Command Line analysis  |
| <b>Display Object Configuration</b>      | Displays the Monitoring Studio configuration report for the Command Line instance and all its dependent instances |
| <b>Cut</b>                               | Cuts this Command Line analysis instance  |
| <b>Copy</b>                              | Copies this Command Line analysis instance  |
| <b>Paste</b>                             | Pastes a previously copied or cut string search or numeric value extraction instance                              |
| <b>Delete</b>                            | Deletes the Command Line analysis and all its dependent instances   |
| <b>Rename</b>                            | Renames the command line execution monitoring instance  |
| <b>Pause monitoring</b>                  | Pauses the monitoring of the Command Line instance and that of its dependent instances                            |

**SENTRY SOFTWARE**

| <b>Menu Command</b>       | <b>Description</b>  |
|---------------------------|---|
| <b>Resume monitoring</b>  | Resumes the monitoring of the Command Line instance as well as that of its dependent instances            |
| <b>Refresh parameters</b> | Re-executes the Command Line and refreshes all its parameters as well as those of its dependent instances |

## 17. SW\_PROCESSES

### Parameters

| Name                                 | Description   | Value Set By      |
|--------------------------------------|---|-------------------|
| <b>ChildCount</b>                    | Displays the number of children of the matching process(es)<br>Unit: Processes                            | SW_SENTRY/proColl |
| <b>Count</b>                         | Displays the number of processes that match the criteria<br>Unit: Processes                               | SW_SENTRY/proColl |
| <b>HandleCount</b><br>(NT only)      | Displays the number of handles opened by the matching process(es).<br>Unit: Handle                        | SW_SENTRY/proColl |
| <b>PageFaultsPerSec</b><br>(NT only) | Displays the number of page faults per second caused by the matching process(es)<br>Unit: Page faults/sec | SW_SENTRY/proColl |
| <b>PageFileBytes</b><br>(NT only)    | Displays the page file used by the matching process(es)<br>Unit: Megabytes                                | SW_SENTRY/proColl |
| <b>PrivateBytes</b><br>(NT only)     | Displays the private bytes of the matching process(es)<br>Unit: Megabytes                                 | SW_SENTRY/proColl |
| <b>ProcessorTime</b>                 | Displays the processor time percent used by the matching process(es)<br>Unit: Percentage (%)              | SW_SENTRY/proColl |
| <b>ThreadCount</b><br>(NT only)      | Displays the number of threads of the matching process(es)<br>Unit: Threads                               | SW_SENTRY/proColl |
| <b>VirtualBytes</b>                  | Displays the virtual memory used by the matching process(es).<br>Unit: Megabytes.                         | SW_SENTRY/proColl |
| <b>WorkingSet</b><br>(NT only)       | Displays the working set size of the matching process(es)<br>Unit: Megabytes                              | SW_SENTRY/proColl |

### InfoBox

| Name                  | Description   |
|-----------------------|---|
| <b>Instance ID</b>    | PATROL internal identifier of the Process monitoring                  |
| <b>Instance Type</b>  | Type of the instance (Process)  |
| <b>Instance Class</b> | Class of the instance (SW_PROCESSES)                                  |
| <b>Parent ID</b>      | PATROL internal identifier of the Process instance's parent           |
| <b>Application ID</b> | PATROL internal identifier of the Process instance's root application |

## Menu Commands

| Menu Command                        | Description   |
|-------------------------------------|---|
| <b>Edit</b>                         | Edits the Process monitoring settings   |
| <b>Set Thresholds</b>               | Sets thresholds for the parameters of this instance   |
| <b>Set Polling Interval</b>         | Sets the polling interval for the instance  |
| <b>Set Alert Actions</b>            | Adds specific Alert Actions to the Process monitoring   |
| <b>Display Object Configuration</b> | Displays the Monitoring Studio configuration report for the Process monitoring instance and all its dependent instances |
| <b>Cut</b>                          | Cuts this Process monitoring instance   |
| <b>Copy</b>                         | Copies this Process monitoring instance   |
| <b>Delete</b>                       | Deletes the Process monitoring  |
| <b>Rename</b>                       | Renames the Process monitoring instance   |
| <b>Pause monitoring</b>             | Pauses the monitoring of the Process monitoring instance  |
| <b>Resume monitoring</b>            | Resumes the monitoring of the Process monitoring instance   |
| <b>Refresh parameters</b>           | Refreshes all instance parameters of the SW_PROCESSES class   |

## 18. SW\_SENTRY

A single instance of the SW\_SENTRY class is created and labeled *Monitoring Studio*. Once the solution is installed, it is the only visible icon under the host icon in the PATROL Console. This icon gives you access to various monitoring tools available in Monitoring Studio. Monitored instances will be placed under the *Monitoring Studio* icon by default. You can also use this icon to create new application/container icons in the PATROL Console tree.

### Parameters

| Name                   | Description  | Polling Interval |
|------------------------|--|------------------|
| <b>ApplicationColl</b> | Collector that checks whether the application signature files are present, thereby indicating that the application is present and should be monitored. Signature files are specified when setting up a new application monitoring. | every 2 minutes  |
| <b>ExtraFileList</b>   | Non-visible  | every 2 minutes  |
| <b>FileSystemColl</b>  | File System collector  | every 2 minutes  |
| <b>NTEventColl</b>     | Windows Event collector  | every 2 minutes  |
| <b>NTServiceColl</b>   | Windows Service collector  | every 2 minutes  |
| <b>ProColl</b>         | Process Collector. Finds the processes that match the criteria and collects the performance information about the matching processes   | every 2 minutes  |

### InfoBox

| Name             | Description                                       |
|------------------|---|
| <b>Contact</b>   | Contact information                               |
| <b>Copyright</b> | Copyright information                             |
| <b>Product</b>   | Product name                                      |
| <b>Release</b>   | Release date of this version of Monitoring Studio |
| <b>Support</b>   | Support information                               |
| <b>Version</b>   | Monitoring Studio version number                  |

### Menu Commands

| Menu Command                                    | Description   |
|---|---|
| <b>New &gt; Process monitoring...</b>           | Starts the process monitoring wizard                  |
| <b>New &gt; Windows Service monitoring...</b>   | Starts the Windows service monitoring wizard          |
| <b>New &gt; File monitoring and analysis...</b> | Starts the file monitoring and analysis wizard        |
| <b>New &gt; Folder monitoring...</b>            | Starts the folder monitoring wizard                   |
| <b>New &gt; File System monitoring...</b>       | Starts the file system monitoring wizard              |
| <b>New &gt; Command Line analysis...</b>        | Starts the command line execution and analysis wizard |
| <b>New &gt; Database Query analysis...</b>      | Starts the database query analysis wizard             |
| <b>New &gt; Java MBean polling...</b>           | Starts the JMX Polling wizard                         |

**SENTRY SOFTWARE**

| <b>Menu Command</b>                                    | <b>Description</b>  |
|--|---|
| <b>New &gt; WMI Query analysis...</b>                  | Starts the WMI Query analysis wizard  |
| <b>New &gt; Web Request analysis...</b>                | Starts the Web request analysis wizard  |
| <b>New &gt; Web-farm monitoring...</b>                 | Starts the Web-farm monitoring wizard   |
| <b>New &gt; SNMP polling...</b>                        | Starts the SNMP polling wizard.   |
| <b>New &gt; SNMP Trap listening...</b>                 | Starts the SNMP trap listening wizard   |
| <b>New &gt; Windows Event monitoring...</b>            | Starts the Windows EventLog monitoring wizard. (On Windows Agents only)   |
| <b>New &gt; Windows Performance monitoring...</b>      | Starts the Windows Performance counter monitoring wizard. (On Windows Agents only)  |
| <b>New &gt; KM Watch...</b>                            | Starts the KM Watch wizard  |
| <b>New &gt; Application icon (container)...</b>        | Starts the new application/container icon wizard  |
| <b>Paste</b>   | Pastes the previously copied instance under the Monitoring Studio icon  |
| <b>Delete all</b>                                      | Deletes all items created under the Monitoring Studio icon  |
| <b>Tools &gt; Process Viewer</b>                       | Starts the process viewer tool  |
| <b>Tools &gt; File Viewer</b>                          | Starts the file viewer tool   |
| <b>Tools &gt; Windows EventLog Reader</b>              | Starts the Windows EventLog Reader tool. (On Windows Agents only)   |
| <b>Tools &gt; SNMP Browser</b>                         | Starts the SNMP browser tool  |
| <b>Tools &gt; Real-time SNMP Trap listener</b>         | Starts the real-time SNMP trap listener   |
| <b>Import and Export &gt; Export configuration</b>     | Starts the Export configuration wizard  |
| <b>Import and Export &gt; Import configuration</b>     | Starts the Import configuration wizard  |
| <b>Options &gt; Thresholds management...</b>           | Shows the thresholds management options   |
| <b>Options &gt; Debug</b>                              | Shows the debug options   |
| <b>Display Configuration &gt; Object Configuration</b> | Displays the Monitoring Studio configuration report for all objects under the Monitoring Studio icon  |
| <b>Display Configuration &gt; Entire Configuration</b> | Displays the Monitoring Studio configuration report for all objects under the Monitoring Studio icon as well as those under all user-defined containers |
| <b>Display Configuration &gt; Report Scheduler</b>     | Starts the configuration report scheduler wizard  |
| <b>License...</b>                                      | Shows the currently registered license keys and registers new license keys  |
| <b>About...</b>  | Shows the version and general information about Monitoring Studio   |

## 19. SW\_SNMP\_POLLING

### Parameters

| Name                   | Description  | Value set by    |
|------------------------|--|-----------------|
| <b>Content</b>         | Content of the polled SNMP variable.<br>Note: Only applicable to variables of string type<br>Unit: N/A | SNMPPollingColl |
| <b>SNMPPollingColl</b> | Polls the SNMP variable and collects the information received  |                 |
| <b>Status</b>          | Status of the SNMP Polling<br>Unit: 0 = working, 1 = a problem occurred                                | SNMPPollingColl |
| <b>Value</b>           | Value of the SNMP variable<br>Note: Only applicable to variables of numeric type<br>Unit: Varies       | SNMPPollingColl |

### InfoBox

| Name                  | Description  |
|-----------------------|--|
| <b>ID</b>             | PATROL internal identifier of the SNMP Polling                             |
| <b>Parent ID</b>      | PATROL internal identifier of the SNMP Polling instance's parent           |
| <b>Application ID</b> | PATROL internal identifier of the SNMP Polling instance's root application |
| <b>OID</b>            | OID that is polled   |
| <b>OID type</b>       | Type of the value of the selected OID (numeric or string)                  |
| <b>Host</b>           | Host name where the SNMP agent is running                                  |
| <b>Port</b>           | Port used to connect to the SNMP agent                                     |
| <b>Community</b>      | Community used to connect to the SNMP agent                                |

### Menu Commands

| Menu Command                             | Description   |
|--|---|
| <b>New &gt; Numeric Value Extraction</b> | Creates a new numeric value extraction for this SNMP Polling  |
| <b>New &gt; String Search</b>            | Creates a new string search for this SNMP Polling   |
| <b>Edit</b>                              | Edits the SNMP Polling settings   |
| <b>Set Thresholds</b>                    | Sets thresholds for the parameters of this instance   |
| <b>Set Polling Interval</b>              | Sets the polling interval for the instance  |
| <b>Set Alert Actions</b>                 | Adds specific Alert Actions to the SNMP Polling.  |
| <b>Display Object Configuration</b>      | Displays the Monitoring Studio configuration report for the SNMP Polling instance and all its dependent instances |
| <b>Cut</b>                               | Cut this SNMP Polling instance  |
| <b>Copy</b>                              | Copies this SNMP Polling instance   |
| <b>Paste</b>                             | Pastes a previously copied or cut string search or numeric value extraction instance                              |

**SENTRY SOFTWARE**

| <b>Menu Command</b>       | <b>Description</b>   |
|---------------------------|--|
| <b>Delete</b>             | Deletes the SNMP Polling and all its dependent instances                                       |
| <b>Rename</b>             | Renames the SNMP Polling instance  |
| <b>Pause monitoring</b>   | Pauses the SNMP Polling as well as all its dependent instances                                 |
| <b>Resume monitoring</b>  | Resumes the SNMP Polling as well as all its dependent instances                                |
| <b>Refresh parameters</b> | Re-polls the OID and refreshes all its parameters as well as those of its dependent instances. |

## 20. SW\_SNMP\_TRAPS

### Parameters

| Name                     | Description  | Value set by   |
|--------------------------|--|--|
| <b>MatchingTrapRate</b>  | Number of SNMP traps matching the search<br>Unit: Trap   | SNMPtrapColl   |
| <b>MatchingTrapCount</b> | Number of matching SNMP traps per minute<br>Unit: Trap   | SNMPtrapColl and a detached PSL process when a trap is received. |
| <b>SNMPTrapColl</b>      | The SNMP trap collector is a detached PSL process launched at the start of Monitoring Studio. This process waits for SNMP Traps and analyzes traps as it receives them.<br>Default polling interval: 2 minutes |  |

### InfoBox

| Name                             | Description   |
|----------------------------------|---|
| <b>ID</b>                        | PATROL internal identifier of the SNMP Trap listening                             |
| <b>Parent ID</b>                 | PATROL internal identifier of the SNMP Trap listening instance's parent           |
| <b>Application ID</b>            | PATROL internal identifier of the SNMP Trap listening instance's root application |
| <b>Source IP</b>                 | IP address of the SNMP agent that raises the traps                                |
| <b>Community</b>                 | Community used to listen to traps   |
| <b>Enterprise ID</b>             | Enterprise ID of the SNMP agent that raises the traps                             |
| <b>Trap Number</b>               | Number of the searched trap   |
| <b>OID 1</b>                     | OID of the first varBind of the searched traps                                    |
| <b>String 1</b>                  | Searched string in the first varBind  |
| <b>OID 2</b>                     | OID of the second varBind of the searched traps                                   |
| <b>String 2</b>                  | Searched string in the second varBind   |
| <b>Acknowledging Trap Number</b> | Number of the trap that will acknowledge this trap search                         |
| <b>Acknowledging OID 1</b>       | OID of the first varBind of the trap that will acknowledge this trap search       |
| <b>Acknowledging String 1</b>    | Searched string in the first varBind of the acknowledging trap                    |
| <b>Acknowledging OID 2</b>       | OID of the second varBind of the trap that will acknowledge this trap search      |
| <b>Acknowledging String 2</b>    | Searched string in the second varBind of the acknowledging trap                   |
| <b>Timeout</b>                   | Timeout for auto-acknowledgment   |
| <b>Run Alert Actions</b>         | Indicates when Alert Actions should be executed                                   |

## Menu Commands

| Menu Command                        | Description   |
|-------------------------------------|---|
| <b>Edit</b>                         | Edits the SNMP Trap listening settings  |
| <b>Set Thresholds</b>               | Sets thresholds for the parameters of this instance   |
| <b>Set Polling Interval</b>         | Sets the polling interval for the instance  |
| <b>Set Alert Actions</b>            | Adds specific Alert Actions to the SNMP Trap listening  |
| <b>Display Object Configuration</b> | Displays the Monitoring Studio configuration report for the SNMP Trap listening and all its dependent instances |
| <b>Cut</b>                          | Cuts this SNMP Trap listening instance  |
| <b>Copy</b>                         | Copies this SNMP Trap listening instance  |
| <b>Delete</b>                       | Deletes the SNMP Trap listening instance  |
| <b>Rename</b>                       | Renames the SNMP Trap listening instance  |
| <b>Acknowledge all and reset</b>    | Acknowledges all alerts on the SNMP Trap instance and resets the <i>MatchingTrapCount</i> parameter to '0'      |
| <b>Pause monitoring</b>             | Pauses the monitoring of the SNMP Trap listening instance   |
| <b>Resume monitoring</b>            | Resumes the monitoring of the SNMP Trap listening   |
| <b>Refresh monitoring</b>           | Refreshes the parameters of the SNMP Trap listening instance  |

## 21. SW\_STRINGS

### Parameters

| Name                     | Description   | Value set by   |
|--------------------------|---|--|
| <b>LastMatchingLines</b> | <p>Lines matching the String Search</p> <p>Unit: N/A</p> <p>Note: The number of lines displayed can be changed to a custom value by adding the variable "/MASAI/SENTRY8/LastMachingLinesNumber" with the proper line number in the PATROL Agent configuration.</p> <p>Default: the 10 last matching lines are displayed</p> | The collector of the parent instance (SW_FILES, SW_OSCOMMANDS, etc.) |
| <b>MatchingLineCount</b> | <p>Number of lines matching the String Search</p> <p>Unit: Line</p>   | The collector of the parent instance (SW_FILES, SW_OSCOMMANDS, etc.) |
| <b>MatchingLineRate</b>  | <p>Number of lines matching the String Search per minute</p> <p>Unit: Line/minute</p> <p>The MatchingLineRate parameter is only activated for String Searches in LOG files and in "never-ending" command lines.</p>   | The collector of the parent instance (SW_FILES, SW_OSCOMMANDS, etc.) |

### InfoBox

| Name                      | Description   |
|---------------------------|---|
| <b>ID</b>                 | PATROL internal identifier of the String Search                             |
| <b>Parent ID</b>          | PATROL internal identifier of the String Search instance's parent           |
| <b>Application ID</b>     | PATROL internal identifier of the String Search instance's root application |
| <b>Parent type</b>        | Type of the parent (File, OSCOMMAND, etc.)                                  |
| <b>Search</b>             | Search mode   |
| <b>Lines</b>              | Lines that are searched   |
| <b>Acknowledge String</b> | String that automatically acknowledges this string search                   |
| <b>Acknowledge</b>        | Enables the auto-acknowledgment feature                                     |
| <b>Timeout</b>            | Timeout for the auto-acknowledgment   |
| <b>Run Alert Actions</b>  | When Alert Actions have to be executed                                      |

## Menu Commands

| Menu Command                        | Description   |
|-------------------------------------|---|
| <b>Edit</b>                         | Edits the String Search settings  |
| <b>Set Thresholds</b>               | Sets thresholds for the parameters of this instance   |
| <b>Set Polling Interval</b>         | Sets the polling interval for the instance  |
| <b>Set Alert Actions</b>            | Adds specific Alert Actions to the String Search  |
| <b>Display Object Configuration</b> | Displays the Monitoring Studio configuration report for the String Search and all its dependent instances |
| <b>Cut</b>                          | Cuts this String Search instance  |
| <b>Copy</b>                         | Copies this String Search instance  |
| <b>Delete</b>                       | Deletes the String Search   |
| <b>Rename</b>                       | Renames the String Search instance  |
| <b>Acknowledge all and reset</b>    | Acknowledge all alerts for this instance. The <i>MatchingLineCount</i> parameter is set to zero           |
| <b>Pause monitoring</b>             | Pauses the monitoring of the String Search instance   |
| <b>Resume monitoring</b>            | Resumes the monitoring of the String Search instance  |

## 22. SW\_TRANSFORM

### Parameters

| Name                   | Description   |
|------------------------|---|
| <b>TransformResult</b> | Lines matching the content of the text pre-processed<br>Unit: N/A |

### InfoBox

| Name                  | Description   |
|-----------------------|---|
| <b>ID</b>             | PATROL internal identifier of the Text Pre-processing instance                    |
| <b>Parent ID</b>      | PATROL internal identifier of the Text Pre-processing instance's parent           |
| <b>Application ID</b> | PATROL internal identifier of the Text Pre-processing instance's root application |
| <b>Parent type</b>    | Type of the parent (File, OSCCommand, etc.)                                       |

### Menu Commands

| Menu Command                             | Description   |
|--|---|
| <b>New &gt; String Search</b>            | Creates a new string search for this Text- pre-processing instance  |
| <b>New &gt; Numeric Value Extraction</b> | Creates a new numeric value extraction for this Text- pre-processing instance   |
| <b>Edit</b>                              | Edits the Text-preprocessing monitoring settings  |
| <b>Display Object Configuration</b>      | Displays the Monitoring Studio configuration report for the Text-preprocessing instance and all its dependent instances |
| <b>Cut</b>                               | Cuts this instance  |
| <b>Copy</b>                              | Copies this instance  |
| <b>Paste</b>                             | Pastes a previously copied or cut string search or numeric value extraction instance                                    |
| <b>Delete</b>                            | Deletes the Text-preprocessing monitoring and all its dependent instances   |
| <b>Rename</b>                            | Allows you to rename this Text- pre-processing instance   |
| <b>Pause monitoring</b>                  | Pauses the monitoring of this Text- pre-processing instance   |
| <b>Resume monitoring</b>                 | Resumes the monitoring of this Text- pre-processing instance  |

#### About BMC® Software

BMC Software, Inc. [NYSE:BMC], is a leading provider of enterprise management solutions that empower companies to manage their IT infrastructure from a business perspective. Delivering Business Service Management, BMC Software solutions span enterprise systems, applications, databases, and service management. Founded in 1980, BMC Software has offices worldwide and fiscal 2004 revenues of more than \$1.4 billion. For more information about BMC Software, visit [www.bmc.com](http://www.bmc.com).

#### About Sentry Software™

Sentry Software, a BMC MarketZone Direct and Technology Alliance Partner, provides monitoring solutions that expand and enhance the capabilities of BMC Performance Manager, thus enabling up to 100-percent coverage of any infrastructure. Sentry Software specializes in single solutions for multi-platform monitoring of hardware, custom applications, or any IT component, as well as blackout windows. Sentry Software products are deployed in diverse industry sectors across the globe. For more information about Sentry Software, please visit [www.sentrysoftware.net](http://www.sentrysoftware.net).

